

# JWA

NOVEMBER 7, 2011  
**Building on  
Excellence**



**Introducing John  
Wayne Airport's**

## **Terminal C**

**JWA  
Through the  
Years**

**Travel  
Destinations**

**Brand-new  
& Restaurants  
& Concessions**

**Parking, Check-in  
& other innovations**

**PLUS: A Handy  
Pull-Out Guide**

Charter Sponsor

**west coast Air**

VIP Sponsors

**Gensler**



An Advertising Supplement to  
the Orange County Business Journal







# Some sparks you want. Others you don't.

Adversarial relationships are all too typical in the construction industry, but they don't serve your best interests.

We do. As an owner's contractor, West Coast Air Conditioning Co. will be at your side from your project's inception through completion. We'll serve as your advocate. We'll tell you exactly what needs to happen for you to get what you want, and then we'll do what it takes to make it happen.

The only sparks you'll get from us are the ones you want.

**Specialists in:**

**Cogeneration / power creation**

**Central plants**

**School construction and modernization**

**Energy reduction**

## **West Coast Air Conditioning Co. Inc.**

Celebrating 50 years in 2012

1155 Pioneer Way • Suite 101 • El Cajon, CA 92020  
619-561-8000 • [www.wcac.com](http://www.wcac.com)

California License No. 262349

**west coast Air**





# JWA

## TABLE OF CONTENTS

### Introducing John Wayne Airport's NEW Terminal C

#### COVER STORIES

#### A-14/ Shop Talk An Appetite for Variety

*With the opening of Terminal C, JWA passengers now have significantly more shopping and dining options. Tamarindo margarita, anyone?*

#### A-20/ Terminal C 'C' is for Cutting Edge Aviation

*A commitment to groundbreaking technologies and design continue to make JWA a world-class aviation gateway for business and leisure travel.*

#### A-26/ Historical Timeline As Time Flies By

*From famed aviator Eddie Martin's early airport days in the 1920s, through the leadership of its airport directors, to JWA's 9.98-million-passengers breakthrough in '07... and beyond.*

#### A-28/ Pull-Out Guide Thomas F. Riley Terminal Directory

*Coming or going, you'll want this centerfold map for info on arrival and departure gates, retail details, parking and more.*

#### A-36/ Non-Stop Destinations We Go There!

*With 20 non-stop destinations from JWA, almost every corner of the U.S. and Canada is accessible from right here in Orange County.*



Cover image courtesy of Gensler.

The John Wayne statue is the only remaining bit of the Martin Terminal, which was demolished in 1994.





## Redefining What's Possible

**Design works.** To create value, foster connections, and contribute to our communities. As architects, designers, planners and consultants, we partner with organizations and institutions worldwide to demonstrate how design can deliver value at every scale. Our work reflects an enduring commitment to sustainability and the belief that design is one of the most powerful strategic tools for securing a lasting competitive advantage.

### Gensler

4675 MACARTHUR COURT, SUITE 350  
NEWPORT BEACH, CA 92660  
949.863.9434

[www.gensler.com](http://www.gensler.com)





# JWA

ADVERTISING SUPPLEMENT

Space and light permeate the 60-foot-tall, barrel-vaulted ceiling of John Wayne Airport's new Terminal C Concourse.

## TABLE OF CONTENTS

### **A-6 / From the Director**

A Fresh Approach at John Wayne Airport

### **A-8 / The Officials**

The Orange County Board of Supervisors  
& Airport Commission Members

### **A-10 / Flight Crew**

They Made the JWA Improvement Program Soar

### **A-18 / On ocair.com**

Visiting John Wayne Airport? Check the Web  
Before You Fly...

### **A-24 / Artistic Connections**

JWA Gives Wing to Art, Science & Popular Culture

### **A-34 / Volunteers Extraordinaire**

Q&A With Fred Welch; plus, Getting a Guided Tour

### **A-42 / Building Blocks**

The Construction Zone...by the Numbers

### **A-44 / Fun Facts About JWA**

From the 'Did You Know?' Department

### **A-46 / Travel Packing**

The Clubs Scene: Tips for Golfers on the Go

### **A-48 / More Building Blocks**

Marble: the Global Traveler

### **A-49 / Airport Operations**

JWA...by the Numbers

## ALSO INSIDE

### **A-50 / West Coast Air Conditioning Co.**

Central Utility Plant

### **A-52 / Gensler**

A Better Way to Fly

### **A-54 / Swinerton**

Building a Legacy in Orange County Since 1997





# Proudly Building A Legacy

Since our inception in 1888, Swinerton Builders has built a legacy in the Orange County/Inland Empire Area through our great structures, loyal relationships, and commitment to the local community.



INNOVATION | INTEGRITY | EXPERIENCE



Be Social With Us!

[www.swinerton.com](http://www.swinerton.com)





# A Fresh Approach at John Wayne Airport

On behalf of John Wayne Airport, Orange County, it is an honor for me to announce the opening of Terminal C and Parking Structure C.

As the cornerstone of the multi-year Airport Improvement Program, the new facilities truly exemplify our theme: "Building on Excellence." While we are proud of the new facilities, we are even more proud of the improved services and convenience they will provide to our passengers and the economic benefits they will bring to our community.

The construction associated with the Airport Improvement Program (AIP) created more than 6,600 much-needed jobs. A 2010 Orange County Business Council economic impact study found that the project resulted in nearly \$1.2 billion of direct and indirect economic benefit to the community. It is important to note that these benefits are generated – and our construction has been funded – without the use of tax dollars.

Terminal C adds nearly 300,000 square feet to the existing Thomas F. Riley Terminal and is home to six new gates, more security lanes, three new baggage carousels and a wide variety of new dining and shopping options. The new building will likely feel familiar to travelers – it was designed to blend seamlessly with the existing facility. Although the design is similar to what they're used to, travelers may need to make some adjustments to their routines when visiting the airport (see "Travel Tips for JWA," below right). One of the most exciting technology improvements we've added is a new passenger-friendly, state-of-the-art computer system that will allow passengers to use *any* kiosk in *any* terminal to print boarding passes.

Travelers have told us over the years that they'd like more variety in dining and shopping concessions. We listened! We are very excited about the addition of some terrific new venues for our passengers – many with a distinctly Orange County feel. We are doubling the amount of space dedicated to our concessions and bringing in some amazing new partners: Anaheim Ducks, Carl's Jr., Caterina's, Javi's, Jerry's Wood-Fired Dogs, Ruby's and Zov's. We hope passengers will be inspired to come to the airport a little earlier than usual to enjoy the new dining and shopping options before catching their flight.

In addition to providing a great customer experience, we know that the most important part of our business is offering service to destinations that our customers want. In the past six months, we've announced new service to Vancouver and Calgary, Canada, and seasonal service to Mammoth – and we are firmly committed to bringing more new routes to JWA. The new facilities in Terminal C, including a new international arrivals area, will enable us to do just that. Stay tuned for more in the coming months.

None of these improvements and benefits would be possible, of course, without the vision and leadership of the Orange County Board of Supervisors. We very much appreciate their, and the Orange County Airport Commission's, commitment to providing the highest-quality aviation services and facilities to the Orange County community.

In closing, we are delighted to open our doors to the community and the traveling public. We hope you travel with us soon.

Best regards,

ALAN L. MURPHY  
Airport Director



## Travel Tips for JWA

### Parking

- ★ Know your terminal; park in the nearest parking structure.
- ★ Flight departs Terminal A, park in Structures A1 or A2.
- ★ Flight departs Terminal B, park in Structures B2 or C.
- ★ Flight departs Terminal C, park in Structures B2 or C.
- ★ View the new electronic signage at each parking structure to see, at a glance, what floors have available parking spaces.

### Check-In

- ★ Carrying on your bag? Bypass the ticket counter and check in/print your boarding pass at any available kiosk.

### Dining/Shopping

- ★ Arrive early to enjoy the new restaurants, bars and gift shops before you board your flight.





NOW ARRIVING: ORANGE COUNTY  
NEXT STOP: DISNEYLAND RESORT

**Proud to partner with John Wayne Airport in  
expanding Southern California tourism.**

**Disneyland**  
RESORT





# Orange County Board of Supervisors

The Airport is owned and operated by the County of Orange, which is governed by the Orange County Board of Supervisors, elected by the voters of their district to four-year terms. Each district varies in geographical size, however, the populations are equal at approximately 600,000 residents. Meetings take place Tuesdays at 9:30 a.m.



## BOARD CHAIRMAN

**Bill Campbell, Supervisor**  
Third District  
Phone: 714.834.3330  
Anaheim (portions of), Irvine (portions of), Orange, Tustin, Villa Park, Yorba Linda



## VICE CHAIRMAN

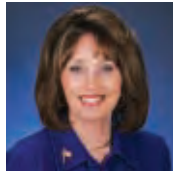
**John M.W. Moorlach, Supervisor**  
Second District  
Phone: 714.834.3220  
Buena Park (portions of), Costa Mesa, Cypress, Fountain Valley (portions of), Huntington Beach, La Palma, Los Alamitos, Newport Beach, Seal Beach, Stanton



**Janet Nguyen, Supervisor**  
First District  
Phone: 714.834.3110  
Fountain Valley (portions of), Garden Grove, Santa Ana, Westminster



**Shawn Nelson, Supervisor**  
Fourth District  
Phone: 714.834.3440  
Anaheim (portions of), Brea, Buena Park (portions of), Fullerton, La Habra, Placentia



**Patricia C. Bates, Supervisor**  
Fifth District  
Phone: 714.834.3550  
Aliso Viejo, Dana Point, Irvine (portions of), Laguna Beach, Laguna Hills, Laguna Niguel, Laguna Woods, Lake Forest, Mission Viejo, Rancho Santa Margarita, San Clemente, San Juan Capistrano

## Orange County Airport Commission

### About the Airport Commission

The Orange County Airport Commission makes recommendations to the Orange County Board of Supervisors for development, maintenance and operation of John Wayne Airport and other airports which may be operated by the County of Orange. It advises the Board of Supervisors and makes recommendations on any matter pertaining to airports or air transportation. It also conducts investigations as it may deem necessary in the exercise of the powers enumerated above. The Airport Commission consists of five members who are appointed by the Board of Supervisors.

### Commission Members

**Bruce B. Junor, Chair**, Third District  
**Chris Welsh, Vice Chair**, Second District  
**Tony Lam**, First District  
**David Bailey**, Fourth District  
**VACANT**, Fifth District

### Meetings

5:00 p.m., 1st and 3rd Wednesday of the month

### Meeting Location

John Wayne Airport  
Eddie Martin Administration Building  
Airport Commission Hearing Room  
3160 Airway Avenue  
Costa Mesa, CA 92626

## John Wayne Airport Arts Commission

### About the Arts Commission

The John Wayne Airport Arts Commission advises and makes recommendations to the Airport Director and the Orange County Board of Supervisors regarding the development, finance and administration of the Airport Arts Program. The Arts Commission consists of five members who are appointed by the Board of Supervisors.

### Commission Members

**Karin Schnell, Chair**, Fifth District  
**Darlene D. DeAngelo, Vice-Chair**, Second District  
**John Acosta**, First District  
**Theresa Morrison**, Third District  
**Margaret Rollins**, Fourth District

### Meetings

9:30 a.m., 1st Wednesday of the month

### Meeting Location

John Wayne Airport  
Eddie Martin Administration Building  
Airport Commission Hearing Room  
3160 Airway Avenue  
Costa Mesa, CA 92626



D 7 CONSULTING INC., a specialist in the Building Envelope/Roofing & Waterproofing Consulting Industry, brings Service and Quality Consulting to our clients as part of our commitment to their overall project needs. D 7 CONSULTING INC. has the ability, credentials and know-how to provide customized services in several areas including:

- Building Envelope System Design for New & Existing Construction
- New Construction Specification & Drawing Review
  - Survey & Evaluation
- Asset Management Programs
- Roofing, Waterproofing & Sealant Replacements
- Quality Assurance Observation
  - Leak Investigation
- Exterior Building Envelope Water & Air Testing
- Forensic Investigation & Litigation Support

1000 Dove St.,  
Suite 102  
Newport Beach  
CA 92660  
(949) 955-2777  
d7consulting.com





# WE ALSO BUILD TEAMWORK.

Balfour Beatty Construction is orchestrating the construction of custom projects in a way that fully engages our clients and employees in order to maximize their success and our potential. Our portfolio includes work within many of Orange County's most trusted public spaces including school districts, government buildings and most recently, John Wayne Airport.



**Balfour Beatty**  
Construction

[www.balfourbeattyus/southwest.com](http://www.balfourbeattyus/southwest.com)





# The Folks Who Made the Airport Improvement Program Soar

Caps off to the individuals and companies who played a key role in implementing the John Wayne Airport Improvement Program.

## THE PLAYERS

**AE CONSULTING SERVICES, INC.**  
Design and Construction Administration  
[www.airportengineering.com](http://www.airportengineering.com)

AE Consulting Services, Inc. was tasked with construction administration services for the surface Parking Lot C, which served the public during the construction of Terminal C and new Parking Structure C. AE Consulting provides professional engineering services exclusive to the aviation community. Since 1992, AE Consulting has completed over 65 domestic and international engineering projects.



**AECOM**  
Construction Management  
[www.aecom.com](http://www.aecom.com)

AECOM was tasked with construction management for the South Remain-Over-Night aircraft parking project for John Wayne Airport's Improvement Program. AECOM is a consulting engineering firm specializing in the planning, design, program/construction management and implementation of airports, transit/rail, highways and bridges, and marine ports and facilities.



**ARCADIS (PinnacleOne)**  
Construction Management  
[www.arcadis-us.com](http://www.arcadis-us.com)

ARCADIS was responsible for the management and oversight of the construction of Terminal C and deconstruction of the B1 Parking Structure. ARCADIS is an international company providing consultancy, design, engineering and management services in infrastructure, water, environment and buildings. The company enhances mobility, sustainability and quality of life by creating balance in the built and natural environments. AR-



AIRPORT MANAGEMENT		
Airport Director <b>Alan L. Murphy</b>	Deputy Airport Director, Business Development <b>Roy Freeman</b>	Deputy Airport Director, Operations <b>Scott Hagen</b>
Assistant Airport Director <b>Loan Leblow</b>	Deputy Airport Director, Facilities <b>Larry Serafini</b>	Deputy Airport Director, Public Affairs <b>Courtney Wiercioch</b>
	Deputy Airport Director, Finance and Administration <b>Steve Simeon</b>	

CADIS develops, designs, implements, maintains and operates projects for companies and governments. With 16,000 employees and more than \$2.7 billion in revenues, the company has an extensive international network supported by strong local market positions.

**BALFOUR BEATTY CONSTRUCTION**  
Construction Management  
[www.balfourbeattyus.com/southwest](http://www.balfourbeattyus.com/southwest)

Balfour Beatty Construction provided construction management services for both the Central Utility Plant and Parking Structure C. The projects were recognized with a Project Achievement Award from the Construction Management Association of America (CMAA) Southern California Chapter. A leader in the U.S. commercial construction industry, Balfour Beatty Construction provides general contracting, at-risk construction management, and design-build services through more than 2,400 professionals nationwide. In the southwest, Balfour Beatty Construction is one of the largest education builders in the country, with extensive experience on military projects and an award-winning portfolio of transportation, government and healthcare projects.



**BNP ASSOCIATES, INC.**  
Construction Manager  
[www.bnpassociates.com](http://www.bnpassociates.com)

BNP was tasked with the design and management of the baggage-handling-system installation. BNP Associates, Inc. has been providing specialized consulting service to the air transportation industry on a worldwide basis since 1971.



**BUTIER ENGINEERING, INC.**  
Construction Management  
[www.butier.com](http://www.butier.com)

As part of the construction management team, Butier provided QA/QC services for Terminal C and full



construction management and QA/QC services for concession modifications in Terminals A, B and C. Since 1976, Butier Engineering has been providing the delivery of heavy civil infrastructure services for public agencies, special districts and the private sector.

**EXCEL PAVING CO.**  
Construction Services

Excel Paving Co. was tasked with construction of Parking Lot C. Excel Paving primarily works on general engineering projects such as roads, airports, port facilities, and parking lots in both public and private areas.



**FAITHFUL+GOULD**  
Project Control Services  
[www.fgould.com](http://www.fgould.com)

Faithful+Gould created the initial and conceptual budget estimate for the design and construction of the Airport Improvement Program. The company managed this budget through design and construction. It also developed and managed a master schedule, coordinating a timeline of projects from the planning to design to construction. All program management, design, CM and project controls were administered by a project management program that it implemented for the Improvement Program, which was customized specifically for the business processes used by JWA. Faithful+Gould is one of the world's largest project and cost-management consultancies, employing over 2,000 staff, with an expanding office base in the Asia Pacific region, Europe, the Middle East and India, the U.K. and the U.S.



**FRASCA AND ASSOCIATES, LLC**  
Financial Advisor  
[www.frascallc.com](http://www.frascallc.com)

Frasca and Associates, LLC, advised and assisted in the execution of an overall financing





plan for the Airport Improvement Program, including the sale of \$233.1 million in revenue bonds in June 2009. Frasca also analyzed alternative financing structures for the Improvement



Program, provided information on industry trends and bond market conditions, coordinated financing team communications, assisted and coordinated in the preparation of Official Statement and other bond disclosure documents, and assisted in preparing information and presentations to credit rating agencies and bond insurers. Frasca & Associates is a transportation consulting and financial advisory firm. The firm ranked first in the nation in providing advisory service to airports in 2010 with a 24% market share.

**GENSLER**  
Design Architect  
[www.gensler.com](http://www.gensler.com)

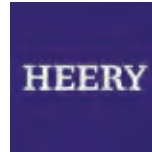
Gensler provided design and architectural services for Terminal C, which included development of a Building Information Model. Gensler also was the design architect on JWA's existing Thomas F. Riley Terminal. Gensler is a leading global architecture, design, planning and strategic consulting firm. For more than 40 years, Gensler has been a pioneer in cre-



ating great places that enhance the quality of work and life.

**HEERY INTERNATIONAL**  
Commissioning Agent  
[www.heery.com](http://www.heery.com)

Heery International was responsible for providing building commissioning services during the design and construction phases of Terminal C and the Central Utility Plant. Building commissioning involves the testing, verification and documentation of building systems operation and functionality prior to occupancy. Founded in 1952, Heery International is a full-service architecture, interior design, engineering and program management firm.



**IDS GROUP**  
Structural Designer  
[www.idsgi.com](http://www.idsgi.com)

The structural design of the JWA Improvement Program was performed by IDS Group of Irvine, Calif. IDS Group is an award-winning company specializing in building and seismic design. IDS utilized state-of-the-art technology in structural design for this essential facility project, which required enhanced seismic performance during a strong earthquake. The structural design of the JWA parking Structure



C received an Excellence in Engineering Award in 2011 for its innovation in structural engineering.

**JACOBS ENGINEERING**  
Engineering Design Services  
[www.jacobs.com](http://www.jacobs.com)

Jacobs provided mechanical, electrical, plumbing, civil, fire alarm and fire protection engineering design services for the Airport Improvement Program. These services were provided for the construction of Terminal C, improvements to Terminals A and B (including the North Commuter Hold Room), and for the deconstruction of Parking Structure B1. Jacobs also provided architectural design and structural, electrical, mechanical and plumbing engineering design services for the implementation of JWA's airport-wide Common Use Passenger Processing System (CUPPS). Jacobs is one of the world's largest and most diverse providers of technical, professional and construction services. Services include architecture, engineering, construction management and program management, along with full operations and maintenance assistance.



**JBT (John Bean Technologies)**  
AERO TECH  
General Contractor  
[www.jbtaerotech.com](http://www.jbtaerotech.com)

JBT was tasked with the installation of the new  
Page A-12 ►►



# Surfin' Safari

Since 2005, Hudson Group and its business partners have been privileged to operate newsstands and specialty retail stores with real Orange County appeal at SNA.

CONGRATULATIONS TO JOHN WAYNE AIRPORT ON THE COMPLETION OF THE LATEST LEG OF YOUR SURFIN' SAFARI...THE SUCCESSFUL LAUNCH OF TERMINAL C!

Hudson News • sunglass hut • RIPCURL • CNN NEWSSTAND





►► continued from Page A-11

passenger loading bridges. JBT is a leading global technology solutions provider to high-value segments of the food processing and air transportation industries. It designs, manufactures, tests and services technologically sophisticated systems and products for customers through its JBT FoodTech and JBT AeroTech segments.



**JERVIS B. WEBB CO.**  
**Baggage Handling System Contractor**  
[www.jervisbwebb.com](http://www.jervisbwebb.com)

Jervis B. Webb was responsible for construction and implementation of the new baggage-handling system in Terminal C. The company is a global leader in providing durable material handling systems, and is known for its innovative engineering and commitment to developing new technologies that improve the way materials are moved.



**McCARTHY BUILDING, INC.**  
**General Contractor**  
[www.mccarthy.com](http://www.mccarthy.com)

McCarthy Building provided construction services for the new Terminal C as well as for up-

grades and renovations to the existing Terminals A and B. Founded in 1864, McCarthy is one of the oldest privately owned construction firms in the U.S. The firm is committed to the construction of high-performance buildings, and is 100 percent employee-owned.



**NUPRECON LP**  
**General Contractor**  
[ncm.force.com](http://ncm.force.com)

Nuprecon LP was tasked with the deconstruction of Parking Structure B1. Founded in 1986, Nuprecon LP is a full-service demolition contractor specializing in preparing any site for construction and development. The company delivers a complete package of integrated services and experienced management solutions.



**PARSONS TRANSPORTATION GROUP, INC.**  
**Program Management Services**  
[www.parsons.com](http://www.parsons.com)

Parsons' scope was to provide comprehensive oversight of the program engineer/architect firms, con-

struction management firms, design-build firm and construction contractors. Parsons, one of the world's largest engineering, construction, technical and management services firms, is a leader in many diversified markets, with a focus on infrastructure, environmental and defense/security.



**POPOV ENGINEERS, INC.**  
**Power and Energy Engineering Services**  
[www.idsgi.com](http://www.idsgi.com)

Popov Engineers developed the bridging document used by the design-builder to support completion of the design of the Central Utility Plant. Located in Irvine, Calif., Popov Engineers was founded by Robert Popov in 1975 and became part of IDS Group in 2009.



**R&L BROSAMER, INC.**  
**General Contractor**  
[www.brosamer.com](http://www.brosamer.com)

R&L Brosamer, Inc. was tasked with constructing the new South Remain-Over-Night aircraft parking area. Brosamer specializes in con-



Let's get your  
expansion plans  
off the ground.

As a part of Southern California for the past century, we understand the challenges and opportunities of OC business like no other bank. Ready to switch to F&M? Our Concierge Team makes it easy. Just call (888) 431-1050 or visit [fmb.com](http://fmb.com)



**Farmers & Merchants Bank®**



Scan this code with your smartphone to schedule an appointment.



©2011 F&M Bank **MEMBER FDIC**





crete paving, bridges and highway and freeway widening, and has completed projects with Caltrans, the City of San Jose and the Port of Oakland.

**SIDLEY AUSTIN LLP**  
**Bond Counsel/Disclosure Counsel**  
[www.sidley.com](http://www.sidley.com)

Sidley Austin LLP performed as Bond Counsel/Disclosure Counsel and advised John Wayne Airport on a variety of issues relating to the funding for the Airport's overall Capital Improvement Program. Sidley provides a broad range of legal services to meet the needs of clients that include multinational and domestic corporations, government authorities, banks and financial institutions.



**SNYDER LANGSTON**  
**Design-Build Contractor**  
[www.snyder-langston.com](http://www.snyder-langston.com)

Snyder Langston was tasked with the design-build of the Common Use Passenger Processing System. Established in 1959, Snyder Langston is a trusted real estate and construction advisor to Fortune 500, midsize and



startup companies. Snyder Langston has successfully developed millions of square feet of space across virtually every real estate sector.

**SWINERTON BUILDERS**  
**General Contractor**  
[www.swinerton.com](http://www.swinerton.com)

Swinerton was tasked with the construction of Parking Structure C. The firm was established in 1888. With offices located throughout the western U.S., the company was named one of the Top 10 Contractors in the U.S. by *Engineering News-Record*.



**ULTRA ELECTRONICS AIRPORT SYSTEMS**  
**Design-Build Subcontractor**  
[www.ultra-as.com](http://www.ultra-as.com)

Ultra Electronics Airport Systems was tasked with the design and implementation of the Common Use Passenger Processing System, working under Snyder Langston as a subcontractor. Ultra is a leading provider of airport information solutions, and has a comprehensive suite of offerings in airport-operation, passenger-processing and ground-handling systems.



**WALKER PARKING CONSULTANTS**  
**Architect/Engineering Services**  
[www.walkerparking.com](http://www.walkerparking.com)

Walker Parking Consultants was tasked with the design of Parking Structure C. Walker is an experienced parking consultant that prides itself in creating innovative, flexible and cost-effective solutions for parking projects throughout the U.S. since 1965.



**WEST COAST**  
**AIR CONDITIONING CO., INC.**  
**Design-Build Contractor**  
[www.westcoast-air.com](http://www.westcoast-air.com)

West Coast Air Conditioning Co., Inc., was responsible for the design-build of the Central Utility Plant project. Founded in 1962, West Coast Air Conditioning has provided vital air conditioning, heating, ventilation, clean rooms, chillers, computer rooms and energy management systems for commercial, industrial and institutional building owners in Southern California. ■



Anaheim Orange County  
looks forward to welcoming  
more visitors through John  
Wayne Airport with their  
recent upgrade!

Get the  
**FREE**  
Anaheim Visitors  
Guide app





# An Appetite for Variety

Terminal C brings JWA passengers significantly more dining and shopping options.



**Hobie Sand Bar: A well-known surf brand brings an eatery to JWA.**

Not only are there all-new choices in Terminal C, but major improvements have been made on concessions in Terminals A and B. In early 2012, JWA will continue improvements to the shops and restaurants that are located in Terminals A and B, including a new full-service dining concept in the Rotated Square. John Wayne Airport sought concessionaires who would bring a mix of concepts that would offer Orange County travelers a wider variety of food choices, and would include both local and national brands.

## PRIMARY FOOD & BEVERAGE HMSHost

### ROTATED SQUARE

**The Fresh Market by Laguna Culinary Arts** (Gates 8 and 9) Chef Laurent Brazier will create dishes from local cheeses, produce and fruit. Features of the Farmer's Market menu include a minestrone soup with pancetta and fresh oregano; and a baby spinach salad with pear, tear-drop tomatoes and shaved red onions, tossed in a pomegranate-and-white-balsamic vinaigrette.

**Ruby's Diner/Ruby's Grab 'n Go** (Between Gates 8 and 9) This quick-service location will feature Ruby's Double Deluxe burgers, fries and famous shakes for travelers looking to get something quick. Ruby's Diner is a full-service restaurant offering breakfast, lunch, dinner and desserts, with favorites such as the Cinnamon Roll French Toast, Ruby's Premium Natural Portobello-Provolone Burger and Double Hot Fudge Brownie Sundae.

### MARKETPLACE

**Javi's** (Between Gates 12 and 14) will offer Mexican cuisine that features fresh seafood, including the chef's Carne y Camarones, a prime filet of beef served with Mexican white shrimp. All sauces, including the house salsa, *salsa quemada* and guacamole, will be made fresh daily. Javi's will also offer a variety of specialty margaritas such as cucumber, jalapeño and *tamarindo*.

**Jerry's Wood-Fired Dogs** (Between Gates 12 and 14) The JWA location will be the first such wood-fired grill in an airport. All of Jerry's hot dogs will come from the same local purveyor that supplies his street-side location. Travelers will be able to customize their hot dogs with over 30 different toppings.

**Pei Wei** (Between Gates 12 and 14) Pan-Asian cuisine offering midpriced bistro meals for travelers.

**Pinkberry** (Between Gates 12 and 14) Refreshing frozen yogurt that's served with sophisticated style.

**Zov's** (Between Gates 12 and 14) Award-winning chef/restaurateur and best-selling cookbook author Zov Karamardian will bring her unique brand of contemporary Eastern Mediterranean cuisine to





There's no shortage of reading materials (at left) and restaurants in Terminal C.

John Wayne Airport with two restaurants. The post-security Zov's location will feature her famous Golden Lentil Soup as well as homemade hummus and tabbouleh.

#### SNACK BAR / GRAB & GO

**Zov's Grab & Go** (Terminal A, pre-security area) will feature a more limited menu with her famous soup, various mezes and sandwiches rounding out the menu.

#### BARS / LOUNGES

**California Pizza Kitchen** (Terminal A, between Gates 4 and 5) The Southern California-based restaurant is known for its hearth-baked pizzas, creative salads and pasta dishes.

**Hobie Sand Bar** (Terminal B, near Gate 12) re-

creates the Hobie Surfboard Co. and its image of surfboards, catamarans and water sports in a restaurant setting. The Hobie Sand Bar is a nice place to run aground and will feature a fresh menu that offers travelers a taste of California.

**Anaheim Ducks' Breakaway Bar & Grill** (Terminal C, between Gates 18 and 19) The Anaheim Ducks hockey team will open its signature airport restaurant at John Wayne Airport. The Anaheim Ducks' Breakaway Bar & Grill will offer travelers appetizers from spicy wings with blue cheese to a charcuterie plate that includes Serrano ham and Picante salami.

**La Tapenade Mediterranean Café** (Terminal B, pre-security) Designed to cater to the upscale, global consumer.

**Ciao Gourmet Market** (Terminal C, near Gate 22) From the savvy gourmand to the family of four looking for a snack, Ciao Gourmet market has something for the foodie in all of us.

#### COFFEE

**Starbucks** America's favorite coffee outpost brings its world-renowned coffee to JWA for over 10 years, serving 700 cups a day from three locations at JWA (Terminals A, B and C).

#### NEWS & GIFT Hudson Group

**Hudson News/Discover Orange County/Tech on the Go** (Terminal A, between Gates 3 and 4) Hudson's award-winning flagship concept will provide international newsstand options for travelers. Hud-

Page A-16 ►►

# HMSHost at John Wayne Airport



HMSHost is proud to partner with John Wayne Airport in bringing local flavor to travelers.

Anaheim Ducks Slapshot Bar & Grill  
California Pizza Kitchen  
Ciao Gourmet Market  
Hobie Sand Bar  
Javi's  
Jerry's Wood-Fired Dogs  
La Tapenade Mediterranean Café  
Pei Wei Asian Diner  
Pinkberry  
Ruby's Diner  
Ruby's Grab 'N Go  
Starbucks Coffee  
Fresh Market by Laguna Culinary Arts  
Zov's Bistro







►► continued from Page A-15

son News also will offer a special Discover Orange County section, with merchandise from OC attractions.

**Hudson News Wall** (Terminal A, between Gates 3 and 4) The Hudson News wall will offer a quick and convenient stop for all our passengers travel needs, from snacks to reading material, right in the Terminal concourse.

**CNN Newsstand Orange County** (Terminal A, pre-security) Billed as "the most trusted name in news," CNN will provide travelers with convenience items and reading materials along with live news feeds and exclusive CNN products in a setting reminiscent of a real TV newsroom.

**Sunglass Hut/Rip Curl** (Terminal A, between Gates 7 and 8) Surfing is one of Orange County's most celebrated exports. At Rip Curl, surfers can pick up all the gear they need for their sport. Non-surfers can get in on the fun with a selection of top-line apparel and accessories. Sunglass Hut is a leader in the sunglass retail world with over 2,000 stores worldwide. Travelers can grab the latest designer shades on their way to one of OC's world-famous beaches.

**CNN Newsstand Orange County/Tech on the Go** (Terminal C, near Gate 15) The one-stop shop for travelers' tech needs, in a convenient in-terminal location.



#### NEWS & GIFT *Paradies-OC, LLC*

**Beachfront News and InMotion Entertainment** (Marketplace, between Gates 13 and 14) Beachfront News will celebrate OC's beaches through the lenses of six live-feed surf cams prominently displayed throughout the store. Merchandise from Orange County-based retailers such as Quiksilver and Roxy will be sold alongside a variety of national newspapers and magazines. InMotion Entertainment provides the most popular electronics products, services and accessories.

**South Coast News** (Terminal B, near Gate 11) A true destination for travelers seeking news and gifts with an expansive merchandise assortment to include local and national brands, organic apparel, a healthy market and products from regional artisans.

**CNBC News Express** (Terminal B, pre-security; and Terminal C) The globally recognized leader in business information is a destination of choice for the traveler who wants today's news and sundries.

**OC Travel Mart** (Terminal C, pre-security) Serving as an extension of the Orange County Business Council and proudly featuring OC favorite Diedrich coffee, this shop will showcase a broad assortment of newspapers, magazines, books, convenient items, snacks and sundries for travelers on the go.

#### FAST FOOD *McDonald's USA, LLC*

**McDonald's and McCafé (Terminals A and B)** The largest food-service organization in the world, operating more than 31,000 McDonald's restau-

## IRVINE, CALIFORNIA

### Plan an unforgettable meeting

Located in the center of Orange County, Calif., just 45 miles south of Los Angeles and 90 miles north of San Diego, meeting-friendly Irvine provides a true Southern California experience. Groups will enjoy outdoor recreation, shopping, golf, diverse dining and within a 20-minute drive find the area's famous beaches and popular attractions.

### Irvine boasts:

- 14 hotels ranging from AAA four-diamond to economy
- Nearly 3,400 sleeping rooms
- Thousands of square feet of meeting space to accommodate 10 to 2,000 people
- A variety of venues available for conferences, receptions, special events and team-building activities
- Close proximity to John Wayne Airport (SNA)

The Center of  
Orange County, CA



[www.destinationirvine.com/meeting](http://www.destinationirvine.com/meeting)







rants worldwide, will bring its expanded menu and redesigned look to JWA, after 20 years serving our passengers.

### FAST FOOD/CASUAL DINING

**Carl's Jr./Green Burrito** (Terminal C, near Gate 16) A Southern California native, CKE includes more than 3,000 locations in 43 states and 13 countries and now brings its dual concept to John Wayne Airport, offering menu items from both Carl's Jr. and Green Burrito.

**Creative Croissants** (Terminal B, near Gate 10) This quick and casual café offers fresh baked pastries every morning. Sandwiches and salads are freshly made to order, in addition to gourmet coffee, Lavazza espresso, fruit smoothies and juice.

### SPECIALTY

**Caterina's** (Marketplace, near Gate 14; Terminal A, near Gate 7) Started in San Clemente, Calif., in 1990, Caterina's was the first self-serve frozen yogurt shop in Orange County. Providing sweet treats to JWA passengers for more than 15 years, the company will continue to do so in its new location, with expanded offerings including frozen yogurt, ice cream, smoothies and pastries, as well as gluten-free products.

**Subway** (Marketplace, between Gates 12 and 13) An internationally recognized sandwich shop, Sub-



Vino Volo in Terminal B.

way will open its first store in JWA with a Tuscany II-themed décor. This location will be operated by the Asfour Family Corp. of Orange County, which operates nine other stores locally. JWA's Subway will be open throughout the day, serving menu items for breakfast, lunch and dinner guests.

**Vino Volo** (Terminal B, near Gate 8) Owned by Taste Inc. of San Francisco, Calif., Vino Volo has been operating retail wine shops and wine-tasting lounges inside airport terminals since 2005, including locations in the Oakland, Sacramento and Washington Dulles International Airports. Vino Volo features an open floor plan and offers food, wine by the glass or bottle, wine tasting and bottles of wine for purchase.

## More Favorite Things

At **Sunglass Hut**, **Ray Ban's "Wayfarers"** are best sellers in John Wayne Airport. Made popular by John Belushi and Dan Aykroyd in the 1980 movie "The Blues Brothers," this style is enjoyed equally by men and women. The vintage shape has been modified in color and shape over the years but still retains its classic appeal.

At **Paradies**, the **Read & Return Program** is a popular way to buy books. This program allows travelers to buy a book, read it, return it within six months of purchase and receive 50 percent off of the purchase price back. The program is good on all books — hardcover or paperback. Returned books are either resold at half price or donated to a local charity as part of the company's commitment to encourage reading.

At **Caterina's**, the company's best sellers are its **handmade chocolates truffles and chocolate turtles**, local favorites that have travelers sending in orders from across the country.

## Aviation Planning | Every airport begins with a plan...



think...

plan...

fly...

Over two decades ago, our friendship began with the planning of the existing 432,000 square-foot terminal at **John Wayne Airport**, which opened in 1990. Our friendship continues as we partner with you again on the noise, air quality, and design services for the new Terminal C scheduled to open this fall. We are proud to be part of your team, and admire and respect your dedication to the community of Orange County, and to the aviation industry at large. But mostly, we are proud to be your friend. On behalf of all the staff at Landrum & Brown, congratulations on your new terminal. We Salute You!



Aviation Planning at the Leading Edge

Cincinnati | Boston | Chicago | Kansas City | New York | Orlando | Phoenix | San Francisco | Southern California | Tampa | Washington D.C.  
Abu Dhabi | Hong Kong | Melbourne | Shanghai



# Visiting John Wayne Airport?

*Check the Web before you fly ...*

## EXPLORE FOOD OPTIONS

at [www.ocair.com/terminal](http://www.ocair.com/terminal)



## IS THERE TIME ...

to grab a coffee before the flight?  
Picking up a loved one? Get info on  
arrival and departure schedules at  
[www.ocair.com/airlines/fids](http://www.ocair.com/airlines/fids)

## QUESTIONS?

Email us at [info@ocair.com](mailto:info@ocair.com); call us at  
(949) 252-5200; follow us on Twitter  
[@JohnWayneAir](https://twitter.com/JohnWayneAir) or "like" us on  
Facebook at [www.facebook.com](http://www.facebook.com/johnwayneairport)  
[/johnwayneairport](https://www.facebook.com/johnwayneairport).



## EXPERTISE COUNTS

When a government investigation is on the horizon, you need experienced and specialized legal counsel to weather the storm.

From California to Washington DC, Stradling's Government Investigations and Enforcement Team defends companies and individuals before and against agencies of the federal government.

**STRADLING**  
**YOCCA CARLSON & RAUTH**  
*Attorneys at Law*

[sycr.com](http://sycr.com)  
(949) 725-4000  
Newport Beach | Sacramento  
San Diego | San Francisco  
Santa Barbara | Santa Monica







### THE JOURNEY ...

does not end when you step off the plane. Research transportation options such as taxis, shuttles and rental cars at [www.ocair.com/groundtransportation](http://www.ocair.com/groundtransportation)

### GET AIRPORT UPDATES

Subscribe to e-news at [ocair.com/subscribe](http://ocair.com/subscribe)

### PARKING INFO

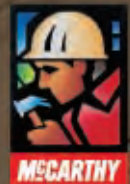
For tips on parking options, valet parking and payment methods, go to [www.ocair.com/parking](http://www.ocair.com/parking)

### WHERE CAN I GO?

With destinations in the U.S. and Canada, start planning your next trip at [www.ocair.com/airlines/non-stopdestinations](http://www.ocair.com/airlines/non-stopdestinations)

### EVER WONDERED ...

how many people fly in and out of JWA each month and throughout the year? Get passenger statistics each month at [www.ocair.com/newsroom/news/airportstats](http://www.ocair.com/newsroom/news/airportstats). ■



# DELIVERING EXCELLENCE

McCarthy is a proud partner of the John Wayne Airport improvement program.

McCarthy. Our Difference is Building. [mccarthy.com](http://mccarthy.com)



# Terminal







# is for Cutting Edge Aviation

JWA has consistently  
been a leader in  
airport innovation.

The most obvious example is the Thomas F. Riley Terminal, which opened in 1990. The building's modern design included vaulted ceilings, skylights and windows from ceiling to floor to increase the use of natural lighting and reduce energy needs. >>>





Pre-conditioned air units used at all terminal gates burn 10 times less fuel than traditional units, resulting in lower costs and carbon emissions.



The Thomas F. Riley Terminal uses vaulted ceilings, skylights and windows to reduce energy needs.



The Airport utilizes “Ecolog I,” the nation’s first permanent airport noise-monitoring system.

Fast forward 20 years, and these innovations have become architectural and operational standards. But the Airport hasn’t stopped with what’s considered in the industry as “best practices.” A continuing commitment to innovative technologies and design continue to make John Wayne Airport a world-class aviation gateway for business and leisure travel.

“Green” before green was popular, John Wayne Airport is an industry leader in aircraft noise monitoring and abatement. In 1971, JWA installed “Ecolog I,” the nation’s first permanent airport noise-monitoring system. The Airport was among the first in the United States to meet FAA’s Stage III noise requirements for all commercial air carrier operations.

JWA continues to have one of the most stringent aircraft noise programs in the country.

In 1999, pre-conditioned air units were installed at each terminal gate which allows aircraft to turn off auxiliary power, thus reducing fossil fuel emissions. Power switches also were installed to make electrical power available for charging ground-support equipment such as tugs and baggage carts. This same equipment has been installed at all gates in Terminal C. The ground-based units burn about 10 times less fuel than traditional units, resulting in lower costs and carbon emissions.

Responsible environmental practices on the airfield are carried over into the roadways as well. The Airport requires that all fleet vehicles, including taxi cabs and parking shuttles, operate

clean-burning compressed natural gas (CNG) or other cleaner-burning fuel alternatives. JWA’s taxi provider, Orange County Yellow Cab, uses 100 percent CNG vehicles.

In 2009, the Airport began installing Light Emitting Diodes (LEDs) on the airfield to provide lighting that meets all FAA safety standards and reduces maintenance and energy costs. LED lighting also has been installed throughout the new Terminal C and is currently being implemented in the existing Terminals A and B of the Thomas F. Riley Terminal.

Safety is the Airport’s number one priority, and the design of the Riley Terminal facilities reflects that commitment. Both the terminals and the parking structures meet the requirements of an “essential” facility, which means they were designed to







The Buckling Restrained Bracing system, used in Parking Structure C, improves safety and efficiency while ensuring maximum seismic stability.

withstand and protect its occupants in a seismic event. JWA has also has installed hundreds of expansion joints throughout its parking structures and terminal buildings to improve their ability to withstand seismic and thermal events. Expansion joints seal the gap of the open space between two structures while maintaining the flexibility for the structures to expand and contract during such events.

Buckling Restrained Bracing (BRB) was used in Parking Structure C, the first concrete parking structure in the U.S. to use this type of system. The BRB system will not only ensure maximum seismic stability, but also improve the safety and efficiency of the structures. Use of the BRB system is expected to be more cost effective and reduce construction time when compared to other construction methods. ■

### ***Congratulations to John Wayne Airport and the County of Orange on the completion of the John Wayne Airport Improvement Program!***

Personalized Services in Private Aviation

**Aircraft Charter & Management | Aircraft Sales | Fractional Shares | Aircraft Maintenance**



West Coast Aviation Services has been a proud partner, sharing the runways and proudly serving the aviation needs of the local community since 1987.

As part of the John Wayne Airport family we are dedicated to supporting the Orange County community by growing and developing our business, creating jobs and investing in the local economy.

[www.WestCoastAviationServices.net](http://www.WestCoastAviationServices.net)

800.352.6153 | 19711 Campus Drive, Suite 150 | Santa Ana, CA 92707



# Artistic Connections

## JWA gives wing to art, science & popular culture

Since opening the Thomas F. Riley Terminal in September 1990, JWA has mounted more than 80 high-quality art exhibitions designed to provide visitors with a memorable – and cultural – travel experience through exhibitions of arts, science and popular culture.

During the last 20 years, the Airport Arts Program has presented a series of museum-quality exhibitions, produced publications, sponsored an annual County-wide Student Art Contest/Exhibition and presented special programs. JWA art exhibitions and programs are organized around themes such as fine arts, popular culture, student art, Orange County history, aviation, and multicultural arts.

The John Wayne Airport Arts Program is under the guidance of the Airport Arts Commission, which advises and makes recommendations to the Airport Director and the Orange County Board of Supervisors regarding the development, finance and administration of the Airport Arts Program. The Arts Commission consists of five members who are appointed by the Board of Supervisors.

The current commission members are:

- Karin Schnell, Chair, Fifth District
- Darlene D. DeAngelo, Vice-Chair, Second District
- John Acosta, First District
- Theresa Morrison, Third District
- Margaret Rollins, Fourth District

John Wayne Airport's legacy of hosting museum-quality art exhibitions will extend into the Airport's new Terminal C both with the Vi Smith Concourse Gallery, located across from Gates 18-21, and the Community Focus Space Program, featuring local artists in displays adjacent to passenger security screening and in baggage claim. In addition, Terminal C provides for a new exhibition space called *Orange County: Destination Art & Culture*. This November, four featured art exhibits are on display, including:

*Enduring Innovation: Boeing in California* by The Boeing Company (Vi Smith Concourse Gallery, across from Gates 2-5);

*In Plane View* by Carolyn Russo of the Smithsonian Institution's National Air and



*Flight of Ideas*  
by Beth Nybeck  
and Dick Jobe.

Space Museum (Vi Smith Concourse Gallery, across from Gates 18-21);

*Warriors, Tombs and Temples: China's Enduring Legacy*, presented by the Bowers Museum and featured in a new Airport exhibition space titled *Orange County: Destination Art & Culture*, which includes 11 wall-mounted art cases located prior to security screening along a new pedestrian walkway connecting Terminals B and C.

*Flight of Ideas* (pictured above) by Beth Nybeck and Dick Jobe – a permanent art display suspended from the ceiling above Terminal C baggage claim.

Some of the more memorable exhibitions from over the years...

### 1990 *Urban Landscapes and Transportation Images*

The Thomas F. Riley Terminal's Inaugural Exhibition was a visual examination of travel and transportation: The romance, glamour and drama of traveling were showcased in this collection of both traditional and mixed-media pieces. Artist Frank Romero, who is known for his colorful murals, contributed two pieces featuring the unique beauty found in Southern California's most popular transportation: travel by car. His lush landscapes depicting Orange County's history made for a gorgeous addition to the brand-new terminal building.

### 1992 *The Big Orange: Orange Crate Labels*

Orange County's earliest commercial success was its citrus produce, packed locally and

shipped nationwide. Oranges, lemons and grapes were among the top crops... and to help distinguish their products, produce farmers developed



unique and colorful labels for the crates that held their fruit. A selection of these crate labels was displayed in John Wayne Airport in 1992, along with other information from Gordon McClelland's book *California Orange Box Labels*.

### 1998 *Building for Air Travel – Art Institute of Chicago*

A world-traveled photographic exhibition of significant aviation architecture from around the globe, it included selected airport terminals, hangars, maintenance buildings and airport-related architecture. The selections were made by the then-curator of architecture from the Art Institute of Chicago. One of the buildings included in his selections was the Thomas F. Riley Terminal at John Wayne Airport.





**Charlie** by Ellen Rose, displayed in 2010.

#### 1999 *Salute to Animation*

With animation art, including images from the Chuck Jones studio, this exhibition was guest curated by Orange County animator and artist Bob Pece.

#### 2001 *Dark Room & Digital*

The Clayton Spada guest-curated exhibition featured the best of fine art photography created in both the standard darkroom method and the then-expanding and relatively new format of digital photography. It portrayed the fact that both methods have strong artistic legitimacy.

#### 2004 *In the Cal – Pastime Goes Primetime in California's Minor League*

Containing writing and memorabilia from California's minor league teams and featuring historic imagery, the exhibit was derived from a photo-documentary book project by Laguna Beach-based photojournalist and co-guest curator Tammy Lechner. Lechner, along with Adrienne Helitzer, focused on seven seasons of the California League, which was composed of 10 Class-A minor league teams: the Bakersfield Blaze, the High Desert Mavericks, the Inland Empire 66ers, the Lake Elsinore Storm, the Lancaster JetHawks, the Modesto A's, the Rancho Cucamonga Quakes, the San Jose Giants, the Stockton Ports and the Visalia Oaks.



**Ceramics** by Fred Stoddard.

#### 2007 *Ceramics: Orange County and Beyond*

Guest curated by Randy Au, this exhibition of contemporary clay or ceramic art was produced mainly in Orange County. Prior to this showing, the only other survey of contemporary Orange County clay was done in 1995 at Saddleback College. From works of traditional technical purity to those of purposely flawed and raw clay work, Orange County was shown to be contributing to contemporary clay art. California has had a huge impact on ceramics nationally and internationally with the likes of Peter Voulkos and Paul Soldner, to name a few.

#### *Orange County – Birthplace of Modern Hang Gliding*

Providing a brief look back at how hang gliding got its start, this exhibition focused on what hang gliding has become: a graceful sport that has matured into a fully respectable form of aviation. Modern materials such as carbon fiber, Dacron and stainless steel have replaced bamboo, plastic and rope. Participants range in age from early teens to pilots well into their eighties. It included two flat-screen monitors that featured airborne hang gliding videos shot by guest curator Owen Morse, an Orange County resident and award-winning nationally recognized hang glider pilot.

#### 2010 *Common Ground 191*

Featuring an art project that began in 2002 by artist Gary Simpson of Laguna Beach, the "191" refers to the number of member states in the United Nations although this has since increased to 192. "Common Ground" indicates the medium of the art work: soil collected and exhibited, along with each nation's flag, from each UN state. The soil from all of the UN countries will be mixed together with cement, pigments and other mixed media to create a series of abstract frescoes, each 42 inches by 42 inches. The exhibition displayed one row of 14 of the frescoes. When assembled in 14 rows of 14 panels and publicly displayed, the completed project is intended to be 50 feet high and 50 feet wide. ■



**Big Sur Noon**, by Joe Forkan, displayed in 2010.

Congratulations to John Wayne Airport on the Completion of the Airport Improvement Project



**Jetway Systems®**

*A Leading Supplier Since 1959*



Jetway® Passenger Boarding Bridges

Jetaire® Preconditioned Air Units

Jetpower® 400Hz Ground Power Units

**www.jbtaerotech.com**



# As Time Flies By

John Wayne Airport Through the Years

**1923**

Eddie Martin opens Eddie Martin Airport after signing a five-year lease with the landowner, the Irvine Company. Martin also opens a flying school and establishes Martin Aviation, later to become one of the nation's oldest aviation firms.



**1939**

Eddie Martin Airport is acquired by the County of Orange and becomes a public Airport. This same year, the FAA gives it the designator SNA, after Santa Ana, which is the largest city near the Airport at the time.

**1940**

Construction begins on a new County airport after the Board of Supervisors appropriates \$7,500 to build a 2,500-foot paved runway and taxi strip a mile south of Martin's Airport.



**1941**



The new County airfield and 2,500-foot paved runway is completed. Martin Aviation (the company) moves to the new facility.

**1946**

William Nichols is named Airport Manager.

**1952**

The first regular airline service begins when Arizona-based Bonanza Airlines signs a lease agreement with the County. Using Douglas DC-3s, Bonanza provides daily service to Los Angeles, San Diego, El Centro-Yuma and Phoenix.



**1957**

The Board of Supervisors creates a five-member Airport Commission to serve as an advisory body. The first members are appointed in 1958.



**1959**

The Board of Supervisors approves a resolution calling for construction of a 10,000-foot runway. It is later reduced to 5,700 feet.

Donald M. Hobbs is named Airport Manager.





## Historical Timeline: 1923 - Present



**1965** Orange County Airport opens its new 5,700-foot runway.

**1967** The new terminal, dedicated by Gov. Ronald Reagan, opens for business. Upon opening, the terminal is handling about 360,000 passengers annually. Airport officials had surveyed major West Coast airlines, all of whom said Orange County had too few passengers to make entrance worthwhile.



**1968** Robert Bresnehan is named Airport Manager.

**1973** The Airport records 682,984 operations and places second in the nation, behind only O'Hare Airport in Chicago.

**1978** Raul Regalado is named Airport Manager.



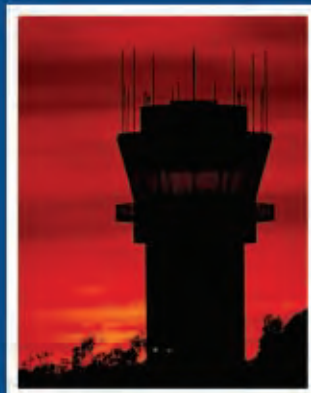
**1979**

The Board of Supervisors renames Orange County Airport in memory of the late movie star and Newport Beach resident John Wayne, who passes away on June 11 of that year.



Continued on Page A-30

**1980** Murray Cable is named Airport Manager.



**1983**

A 60-foot FAA Control Tower is completed, adjacent to Airport Rescue and Fire Fighting Station 33 on the west side of the airfield.

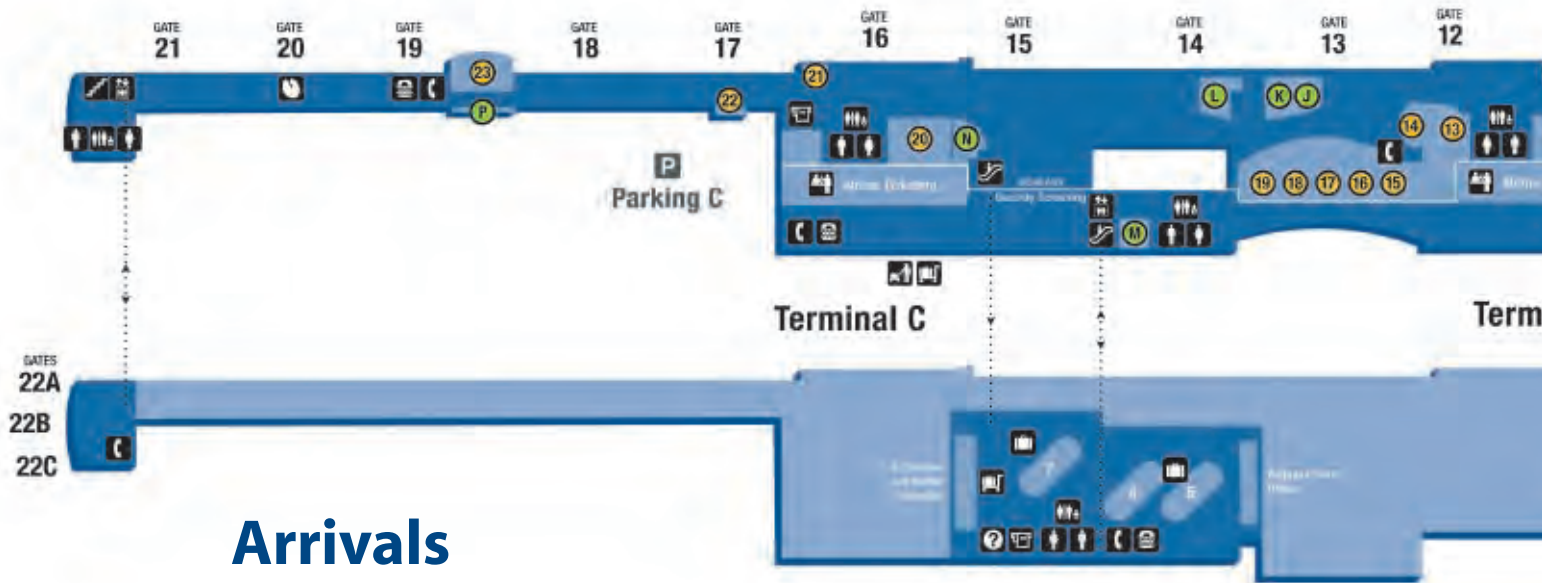




# Thomas F. Riley Terminal

## Departures

*Upper Level*



## Arrivals

*Lower Level*

## Airport Information

**Information** 949.252.5200  
[www.ocair.com](http://www.ocair.com)

**Police Services** 949.252.5000  
**Lost & Found** 949.252.5000

**Terminal Paging** Dial "O" from a white courtesy phone

Free wireless internet access is available throughout the concourses, lounges and concession areas.

Electrical outlets are available in most gate areas between the backs of the passenger seating rows. Work stations are also available throughout the Terminal C gate areas. These services are offered at no cost to travelers.

## Terminal Directory

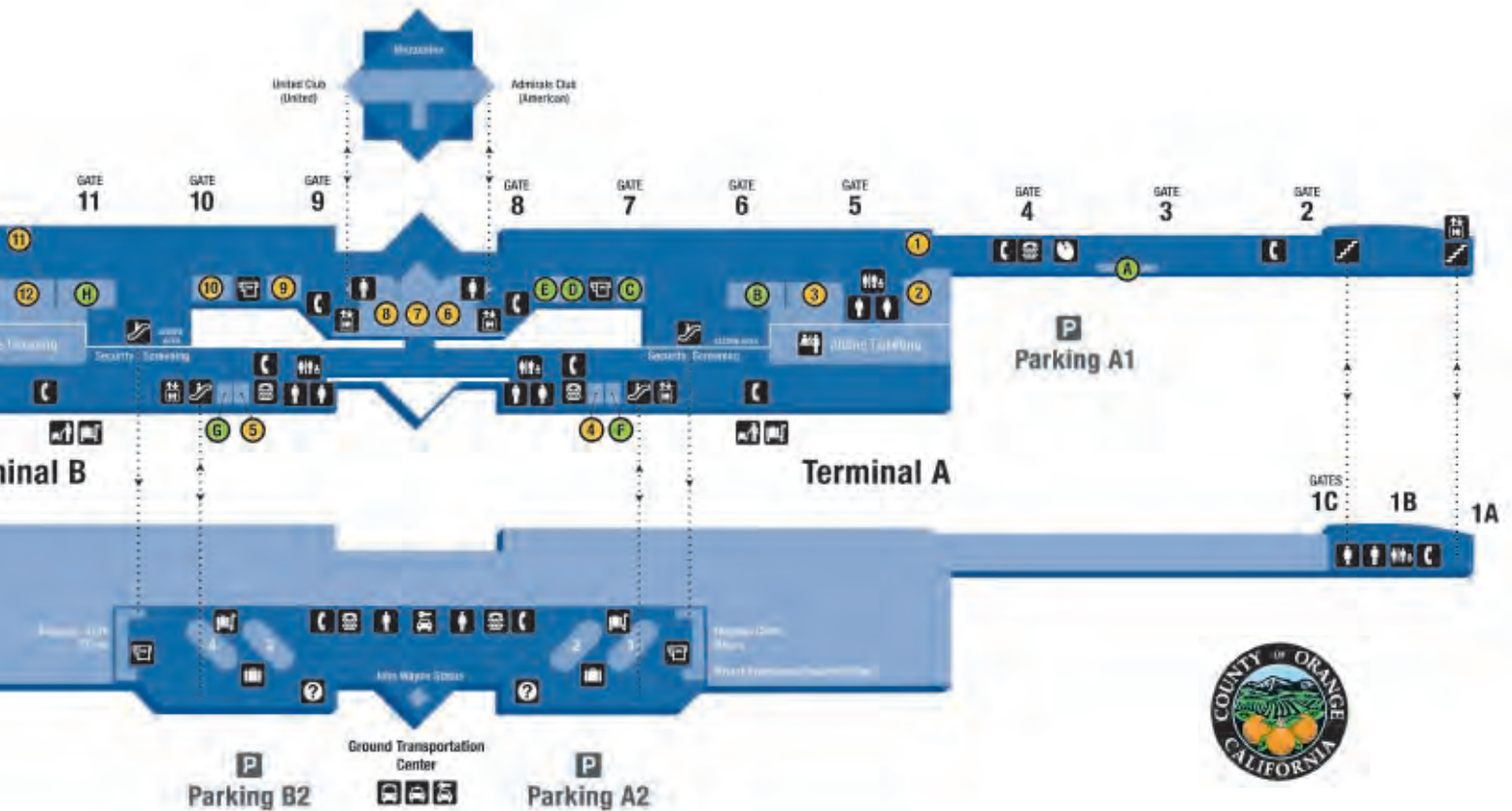
### Dining

- |  |   |
|--|---|
| 1 Starbucks                                    | 13 Hobie Sand Bar                         |
| 2 California Pizza Kitchen                     | 14 Subway                                 |
| 3 McDonald's / McCafé                          | 15 Pei Wei                                |
| 4 Zov's  | 16 Jerry's Wood-Fired Dogs                |
| 5 La Tapenade<br>Mediterranean Café            | 17 Pinkberry                              |
| 6 Ruby's Diner                                 | 18 Zov's                                  |
| 7 Ruby's Grab N Go                             | 19 Javi's                                 |
| 8 Fresh Market by Laguna<br>Culinary Institute | 20 Carl's Jr. / Green Burrito             |
| 9 Vino Volo                                    | 21 Starbucks                              |
| 10 Creative Croissants                         | 22 Ciao Gourmet Market                    |
| 11 Starbucks                                   | 23 Anaheim Ducks Breakaway<br>Bar & Grill |
| 12 McDonald's / McCafé                         |   |





# Directory

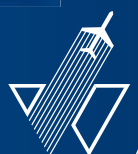


## Symbols Legend

### Shopping

- A** Hudson News Newswall
- B** Hudson News / Discover Orange County / Tech on the Go
- C** Caterina's
- D** Sunglass Hut
- E** Rip Curl
- F** CNN Newsstand Orange County
- G** CNBC News Orange County
- H** South Coast News
- J** InMotion Entertainment
- K** Beachfront News
- L** Caterina's
- M** OC Travel Mart
- N** CNN Newsstand Orange County / Tech on the Go
- P** CNBC News Express

- Men's Restrooms
- Women's Restrooms
- Family Restroom
- Elevator
- Escalator
- Stairs
- Parking
- Buses / Shuttles
- Taxis
- Rental Cars
- Pay Phones
- Telecommunications Devices for the Deaf (TDD)
- Ticketing / Check-in
- Skycaps
- Baggage Carts
- Baggage Claim
- ATM
- Information
- Art Exhibition





# As Time Flies By

## John Wayne Airport Through the Years

The Board of Supervisors approves a new Master Plan and Environmental Impact Report (EIR 508) for the Airport. The centerpiece of the plan is a new terminal, which is 12 times the size of the facility built in 1967.

**1985**

A final judgment regarding the Settlement Agreement is filed and signed by the Honorable Terry J. Hatter, Jr. in Federal Court. The 20-year Agreement between the County of Orange, the City of Newport Beach, the Airport Working Group (AWG) and Stop Polluting Our Newport (SPON) sets limits on noise levels, commercial departures, number of passengers and scope of the capital improvements.

George A. Rebella is named Airport Manager.

**1986**

The General Aviation Noise Ordinance (GANO) goes into effect. Among other things, the GANO specifies noise limitations at defined noise monitor locations and establishes a curfew.

**1988**

A terminal groundbreaking event titled "Flight 1990—JWA's Flight to the Future" is held.

Ground is broken for the Costa Mesa Freeway (SR 55) ramps to provide direct and exclusive access to and from the new terminal.

The Airport serves 4.48 million passengers this year. For the first time since 1980, passenger levels drop slightly (1.5%).



**1989**

Parking Structure B1 opens. It is the first building to be completed under the Improvement Project and is later closed and demolished in 2008 to make way for Terminal C.

**1990**

The Board of Supervisors creates the Airport Arts Commission and appoints five members.

Jan M. Mittermeier is appointed Airport Manager.

Freeway ramps between the Airport and the Costa Mesa Freeway (SR 55) are opened.

The Thomas F. Riley Terminal is dedicated and opened for service. John Wayne Airport's new terminal is named after longtime Fifth District Supervisor Thomas F. Riley, in whose district the Airport is located.

The Airport Noise and Capacity Act of 1990 is adopted and signed into law by President George H. W. Bush. The Act calls for a "phase out" of Stage 2 aircraft and requires federal review and approval of any restrictions on Stage 3 operations. John Wayne Airport's existing noise limitations are grandfathered under the Act.



The Eddie Martin Terminal is demolished.

**1994**

O.B. Schooley is named Airport Director.

**1995**







## Historical Timeline: 1923 - Present

The Airport creates a website, [www.ocair.com](http://www.ocair.com).

**1996**

A direct access road to the Main Street Parking Lot is opened.

John Wayne Airport purchases a state-of-the-art OSHKOSH T3000 emergency vehicle for Aircraft Rescue and Fire Fighting Station 33.



**1997**

Express Valet Parking Service is launched in the Main Street Parking Lot. Curbside Valet is later added in front of Terminals A and B in 2001.

**1998**

Loan Leblow is appointed interim Airport Director. The Volunteer Ambassador Program is launched in the Riley Terminal.

**1999**

An expanded east Parking Structure A2 and B2 is completed – adding 2,000 new parking spaces and an easy-to-access Ground Transportation Center.



*Continued on Page A-32*

**2000**

Alan L. Murphy is appointed Airport Director.



**2001**

(Sept. 11) Following a Federal Aviation Administration (FAA) nationwide directive, all flights are grounded in response to a terrorist attack against the World Trade Center in New York City and the Pentagon in Arlington, VA.

(Sept. 13) The airport receives clearance from the FAA that the airspace is open. John Wayne is the first airport in California with departing commercial passenger flights. Four flights depart: air carriers Skywest, Delta, America West and Aloha.







# As Time Flies By

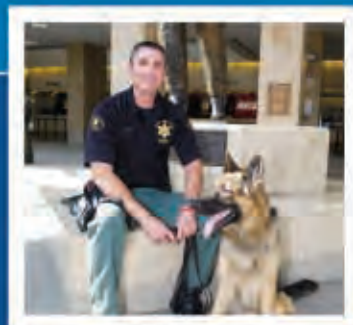
## John Wayne Airport Through the Years

**2002**

In April, John Wayne Airport passenger counts return to pre-9/11 levels.

U.S. Transportation Secretary Norman Y. Mineta announces the deployment of Transportation Security Administration (TSA) federal screeners to passenger security checkpoints at John Wayne Airport.

Explosive Detection Canine Teams (EDT) arrive at John Wayne Airport.



**2003**

The U.S. District Court signs an order confirming the amended JWA Settlement Agreement is consistent with federal law. This order is signed by the Honorable Terry J. Hatter, Jr.

**2005**

The David W. Prebish Aircraft Rescue and Fire Fighting Station 33 is dedicated.



**2006**

The Board of Supervisors adopts a resolution selecting an Improvement Program Financing Plan and approving use of a Passenger Facility Charge (PFC) of \$4.50 per departing passenger to help fund the Airport Improvement Program.

John Wayne Airport launches its new website dedicated to the Airport Improvement Program: [www.ocair.com/improvements](http://www.ocair.com/improvements).

**2007**

Construction begins on the South Remain-Over-Night parking area to make way for the Airport Improvement Program.

JWA serves most passengers ever – 9.98 million passengers in this year.

**2008**



Temporary Parking Lot C is opened on the site of the newly remodeled South Remain-Over-Night aircraft parking area.

Parking Structure B1 is closed to the public. Two weeks later, demolition of the structure is begun in order to make way for the new Terminal C.







## Historical Timeline: 1923 - Present

### 2009

A Pet Relief Area is created at John Wayne Airport to provide a service to those passengers with animals.

John Wayne Airport successfully issues \$233 million in General Airport Revenue Bonds to help fund the Airport Improvement Program.

Construction begins on Terminal C, Parking Structure C and the Central Utility Plant as part of the \$543 million Airport Improvement Program.

New passenger boarding bridges are installed in the Thomas F. Riley Terminal to replace the existing 14 boarding bridges in Terminals A and B.



### 2010



Orange County Business Council completes an Economic Impact Analysis which identifies that the Airport's Capital Improvement Program will create 6,670 jobs and have a total economic effect of more than \$1 billion.

(Aug. 2) McCarthy Building Companies places the final piece of steel on the Terminal C building, demonstrating a significant milestone on the project – known as “topping out.”

The construction of Parking Structure C, with 2,024 spaces, is complete and opens to the public in November 2011.

### 2011

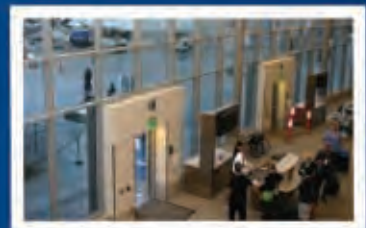
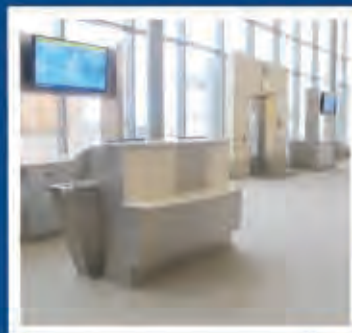
In April, JWA dedicates the Central Utility Plant with 100 local business and elected officials in attendance. Lucy Dunn, CEO Orange County Business Council; and John M. W. Moorlach, Orange County Board of Supervisors, are keynote speakers.



The Common Use Passenger Processing System becomes operational in Terminal A of the Riley Terminal – used by airlines to process passengers and flights.

New cabinetry and gate signage are rolled out in phases – modernizing the look of the terminals with flat-panel flight information displays, and counters and gate number pillars that take up a smaller footprint. The new North Commuter Terminal opens adjacent to Terminal A to service passengers at Gates 1A, 1B and 1C.

Terminal C and Parking Structure C open.





If you're visiting John Wayne Airport, you might notice a few folks dressed in red jackets or vests with a "May I Help You?" button on their lapels. These are the JWA Ambassadors, volunteers who share the responsibility of assisting passengers and visitors to the Airport.

These terrific volunteers, many of whom have decades of experience in the field of aviation, educate visitors about JWA's history as well as provide fun, interesting and useful facts about the Thomas F. Riley Terminal.

John Wayne Airport is fortunate to have approximately 80 dedicated local citizens acting as volunteer Ambassadors. The objective of the Volunteer Ambassador Program is to provide Airport users with friendly, informed service that enhances their experience at John Wayne Airport.

Ambassadors are trained in customer service to assist passengers with questions they have about John Wayne Airport's facilities or services. Information they provide includes directions to particular airlines, gates, restaurants, restrooms, phones and rental-car counters, to name just a few.

What is it like to be a JWA Ambassador? For the answer to that, we spoke with six-year Ambassador Fred Welch, who also serves as a volunteer Professional Services Responder for the Orange County Sheriff's Department, a docent at the Lyon Air Museum and a tour guide at Centennial Farm (the OC Fair's farm). It's safe to say Fred is well versed in providing service to Orange County and the aviation community!



Dedicated volunteer Fred Welch does leave room for a day of golf.

## JWA Ambassador Fred Welch fields questions with aplomb

### When did you become a volunteer?

In 2006, when I retired, I decided I couldn't just golf every day or watch TV all day long, so I Googled "Volunteer Work in Orange County" and that led me to JWA. I met Volunteer Coordinator Jill Matthews and became an Ambassador.

**You also volunteer at many other organizations, two of which — Airport Police Services and the Lyon Air Museum — are located here at the Airport. How did you become involved with these groups?**

While working as a JWA Ambassador, I learned about Centennial Farm [a three-acre working farm at the OC Fair & Event Center created to educate youth about agriculture and its importance to daily life] and I became a volunteer there. Also through JWA I heard about the Professional Services Responders (PSRs) who work with the O.C. Sheriff's Department here at

the Airport. My role as a PSR at John Wayne Airport is completely different than my role as an Ambassador. When the Lyon Air Museum opened, the Ambassadors were invited to tour the building, and during the tour, they asked if anyone would be interested in becoming a docent there, so I joined that program also.

**You are pretty busy for being retired! How many days a week do you volunteer?**

Four days a week. Have to leave one for golf!

**What is your background?**

I was born in Cork, Ireland, and came to the United States in 1957. I joined the Armed Services, where I served as a military police officer and also learned how to fly. Eventually I became employed in the public-relations sector of a major oil company, and moved to Los Angeles, where I met my wife of 43 years. We currently live in Seal Beach.

**What is the most popular question you are asked as an Ambassador?**

"Where is the closest restroom?," followed closely by "Where is my gate?"

**What is your favorite part about your volunteer work at JWA?**

Mostly, I enjoy helping people, especially those who have special needs. I love being around the people who work and travel here. Being a JWA Ambassador is a wonderful way for me to be a part of the Airport family.

*Interested in becoming a JWA Ambassador? Contact Jill Matthews at [jmatthews@ocair.com](mailto:jmatthews@ocair.com) or (949) 252-5168 for more information on the JWA Volunteer Programs Or, visit the County of Orange website [ocgov.com](http://ocgov.com) for other volunteer opportunities.*





Schoolkids and adults alike can enjoy a JWA tour.



## Ambassadors Take You on a Guided Tour

**G**uided tours of the Thomas F. Riley Terminal are available, free of charge. Groups are led by community volunteers trained to be tour guides. They provide explanations of the Riley Terminal architecture and airport history. They educate visitors about the aircraft that fly in and out of John Wayne Airport. Guides begin tours at the John Wayne Statue with a brief presentation. The tour moves through both the arrival and departure levels of one of the terminals, including a stop to visit with the skycaps. Participants will see airline ticket counter areas, a view of the security screening checkpoints and flight information display monitors. Because of heightened security, tour groups are not permitted through the security screening checkpoint or in other secure areas of the Riley Terminal.

Many tours conclude with a visit to the top of one of the parking structures adjacent to the Riley Terminal, where participants can view activity on the airfield, as well as airplanes taking off and landing — often the highlight of the tour.

Children are given a JWA Activity Book that includes various airplanes to color, the pilot's phonetic alphabet, a word search, maze, connect-the-dots and other educational activities.

Volunteer tour guides, including private pilots, teachers, executives and Airport employees, donate their time to support this important aviation education program. Volunteers bring their unique expertise and tremendous enthusiasm to each and every tour.

Tours are scheduled in advance (two or more weeks) and are offered at non-peak traffic hours, usually between 10:30 a.m. and 3:30 p.m., Monday through Friday. Saturday tours may also be arranged. The tour lasts approximately 1½ hours.

Tour groups can be as small as two or three participants, and are limited to a maximum of 25, including chaperones. Larger groups (a maximum of 50 people on a given day) can be accommodated, but will be divided into two groups who will tour concurrently. Children must be at least 6 years old and/or in the first grade and must be accompanied

by an appropriate number of adult chaperones. High school and college tours may be arranged featuring aviation career speakers. Adult groups are also most welcome.

Convenient parking is available in all lots at regular JWA parking rates. Because of heightened security, all

vehicles may be searched when entering the parking structures.

To schedule a tour, contact Jill Matthews at (949)252-5168 or via email at [jmatthews@ocair.com](mailto:jmatthews@ocair.com). This information is also on the JWA website, [www.ocair.com](http://www.ocair.com).

# BUTIER

Construction Managers, Consulting Engineers





## Terminal C... Expanding the Gateway to OC's Future

Butier Engineering, Inc. is proud to be a part of John Wayne Airport's Terminal C Expansion project, having performed QA/QC services as a part of the construction management team. We'd like to congratulate our friends at JWA on the success of one of the largest public works programs in Orange County's history. Butier, an Orange County-based business, has been providing full-service construction management and inspection services throughout Southern California since 1976.

17782 E. 17th Street, Suite 107, Tustin, CA. 92780 ☎ 714.832.7222 🌐 [www.butier.com](http://www.butier.com)





# We Go There!

Fly your way across the USA and Canada from John Wayne Airport.

*With 20 non-stop destinations,  
almost every corner of the  
United States and Canada  
is accessible from right here  
in Orange County.*



*Hawaii*





*Have you been to Atlanta? We go there! Have you always wanted to visit Chicago? We go there! And, in case you've missed it – Hawaii is also on our itinerary. We go there! And you can, too. We've put together some tips to help with your future travel planning, including where we go, which airline goes there, how long it takes and what to do when you arrive...*

#### Atlanta (ATL)

Served by Delta

Flight time: 4 hrs 19 min

The Georgia Aquarium, located in downtown Atlanta, with more than 8 million gallons of water and more aquatic life than any other aquarium, is billed as the largest aquarium in the world.

[www.atlanta.net/](http://www.atlanta.net/)

#### Chicago (ORD/MDW)

Served by American, United, Southwest

Flight time: 3 hrs 27 min

The Navy Pier is among the Midwest's top tourist destinations. Its boardwalk, 150-foot Ferris wheel, boat tours and countless dining and shopping options make it a go-to destination in Chicagoland.

[www.choosechicago.com/](http://www.choosechicago.com/)

#### Chicago



Page A-38 ►►

#### Portland



**Burns & McDonnell Congratulates  
the John Wayne Airport for  
Building on Excellence.**

**We're building on excellence too.**

As a rapidly growing Orange County firm with a rich history in aviation, we appreciate the commitment to customer experience demonstrated by this tremendous project. Thanks for making a great resource even better.



One Pointe Drive, Suite 540 | Brea, CA 92821 | 714-256-1595

[www.burnsmcd.com/orangecounty](http://www.burnsmcd.com/orangecounty)

*Engineering, Architecture, Construction, Environmental and Consulting Solutions*





Dallas



Denver



Newark



Calgary



Houston



Honolulu



Oakland





#### **Dallas/Ft. Worth (DFW)**

**Served by American**

*Flight time: 2 hrs 55 min*

Take a stroll through the Dallas Arts District and discover some of the greatest architecture in the world.

[www.visitdallas.com](http://www.visitdallas.com)

#### **Denver (DEN)**

**Served by Frontier, Southwest, United**

*Flight time: 1 hr 41 min*

Start your exploration of the Mile High City at the Denver Zoo or the nearby Red Rocks Amphitheatre.

[www.visitdenver.com](http://www.visitdenver.com)

#### **Calgary, Alberta, Canada\* (YYC)**

**Served by WestJet**

*Flight time: 2 hrs 26 min*

Heritage Park Historical Village offers an authentic taste of Western Canada as it was from the 1860s up to the 1950s. The village covers 127 acres of land adjacent to Calgary's beautiful Glenmore Reservoir.

[www.visitcalgary.com](http://www.visitcalgary.com)

#### **Honolulu, Oahu\* (HNL)**

**Served by United/Continental**

*Flight time: 5 hrs 10 min*

Oahu is home to Waikiki and the world-famous Waikiki Beach, in itself a major attraction, as well as the USS Arizona Memorial.

[www.gohawaii.com/oahu](http://www.gohawaii.com/oahu)

#### **Houston (IAH)**

**Served by United/Continental**

*Flight time: 2 hrs 45 min*

Space Center Houston is located in the Lyndon B. Johnson Space Center, home also of the world-famous Mission Control Center, the monitoring facility for NASA space flights. Visitors can try on astronaut helmets, steer a spacecraft in the simulator and perhaps even meet a real astronaut.

[www.visithoustontexas.com](http://www.visithoustontexas.com)

#### **Minneapolis/St. Paul (MSP)**

**Served by Delta**

*Flight time: 3 hrs 3 min*

Since opening its doors in 1992, the Mall of America has become one of the top tourist destinations in the country. The mall boasts more than 500 stores and 4.3 miles of storefront space.

[www.minneapolis.org](http://www.minneapolis.org)

#### **Newark (EWR)**

**Served by United/Continental**

*Flight time: 4 hrs 52 min*

Newark is home to the Cathedral Basilica of the Sacred Heart. Completed in 1954 after 55 years of construction, the church is known for its superior French Gothic architecture and hosts an array of concerts throughout the year.

[www.gonewark.com](http://www.gonewark.com)



#### **Las Vegas (LAS)**

**Served by Delta, Southwest**

*Flight time: 28 min*

While known for its casinos, dining and shopping destinations, Vegas is also home to golf courses, aquariums, zoos and museums.

[www.visitlasvegas.com/](http://www.visitlasvegas.com/)

**DELIVERING MORE EFFECTIVELY**

We are AECOM. A proud member of the team that delivered John Wayne Airport's new Terminal C and garage, we have served California's aviation market for more than 50 years. We congratulate the airport and the county on this achievement.

AECOM... Creating, enhancing and sustaining the world's built, natural and social environments.

[www.aecom.com](http://www.aecom.com)

**AECOM**





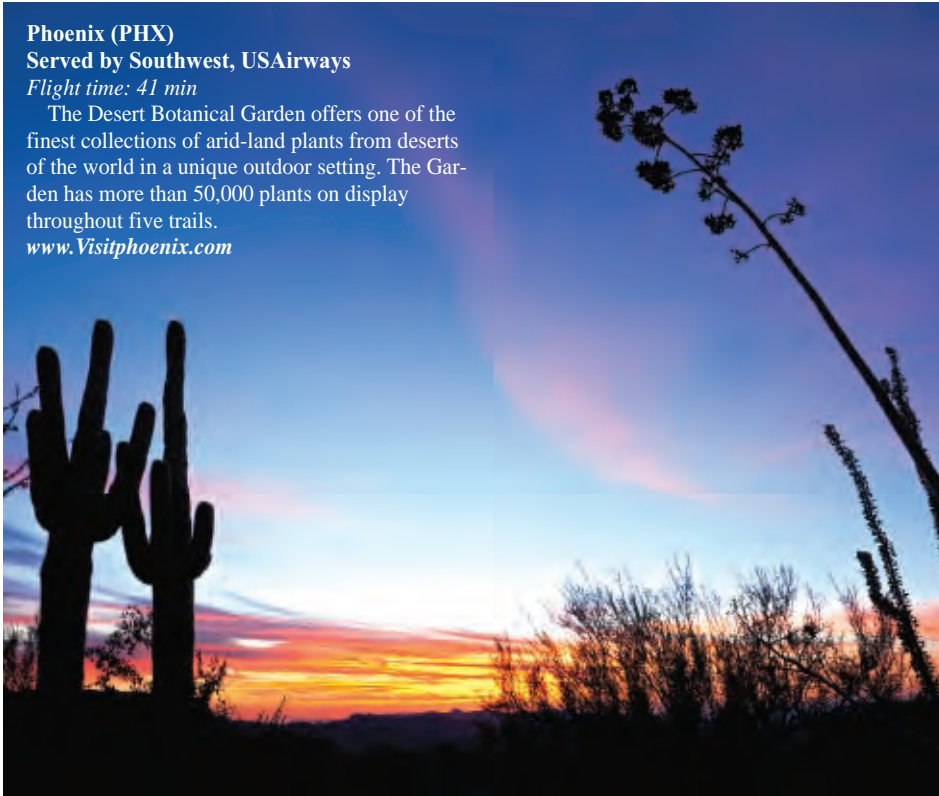
**Phoenix (PHX)**

Served by Southwest, USAirways

Flight time: 41 min

The Desert Botanical Garden offers one of the finest collections of arid-land plants from deserts of the world in a unique outdoor setting. The Garden has more than 50,000 plants on display throughout five trails.

[www.Visitphoenix.com](http://www.Visitphoenix.com)



*San Jose*



*Seattle*



*San Francisco*



*Salt Lake City*



*Vancouver*







### **Oakland (OAK)**

**Served by Southwest**

*Flight time: 45 min*

Home to the Oakland Raiders, the Oracle Arena was recently renovated and now boasts 19,200 seats. The arena also hosts events throughout the year, including concerts and sporting events.

[www.visitoakland.org](http://www.visitoakland.org)

### **Portland (PDX)**

**Served by Alaska**

*Flight time: 1 hr 43 min*

A year-round wonder, the Lan Su Chinese Garden is an authentically built Ming dynasty-style garden. Covered walkways, bridges, pavilions and a richly planted landscape frame a picturesque lake in this urban oasis built by artisans from Portland's sister city of Suzhou.

[www.travelportland.com](http://www.travelportland.com)

### **Sacramento (SMF)**

**Served by Southwest**

*Flight time: 49 min*

The State Capitol building serves as both a museum and the state's working seat of government. Visitors can experience California's rich history and witness the making of history through the modern lawmaking process.

[www.discovergold.org](http://www.discovergold.org)

### **Salt Lake City (SLC)**

**Served by Delta, Delta Connection**

*Flight time: 1 hr 35 min*

Home to world-renowned ski resorts, including the Olympic Park and Utah Olympic Oval, skiers continue to flock to Salt Lake City to enjoy "the greatest snow on earth."

[www.visitsaltlake.com/visit](http://www.visitsaltlake.com/visit)

### **San Francisco (SFO)**

**Served by United, United Express, Southwest**

*Flight time: 45 min*

The Golden Gate Bridge, arguably the most famous bridge in the world, manages to impress even the most experienced travelers with its stunning 1.7-mile span. Approximately 120,000 automobiles drive across it each day; a pedestrian walkway also allows the crossing on foot, with bikes allowed on the western side.

[www.sanfrancisco.travel](http://www.sanfrancisco.travel)

### **San Jose (SJC)**

**Served by Southwest**

*Flight time: 42 min*

The San Jose arts and cultural community has come of age in recent years, with great exhibits at local museums, outdoor events such as the annual SubZERO Festival and the ever popular Ballet San Jose. The ballet season generally runs from October to April or May and features a nearly

month-long run of "The Nutcracker" each December.

[www.sanjose.org](http://www.sanjose.org)

### **Seattle (SEA)**

**Served by Alaska**

*Flight time: 1 hr 57 min*

No trip to Seattle is complete without a visit to Pike Place Market to take in the food, flowers, buskers and assorted vendors. From the market, visitors can descend the Harbor Steps to explore the waterfront, with its shops, seafood-inspired menus and the Seattle Aquarium.

[www.visitseattle.org](http://www.visitseattle.org)

### **Vancouver, British Columbia, Canada (YVR)**

**Served by WestJet**

*Flight Time: 2 hrs 13 min*

Vancouver's Waterfront Renaissance Trail is one of hundreds of picturesque outdoor activity centers. The trail winds along the Columbia River waterfront, and features a seven-foot-tall 700-pound bronze statue of Ilchee. The sculpture, and the small plaza in which it is located, were created in honor of the Chinook people.

[www.tourismvancouver.com](http://www.tourismvancouver.com)

\*Service is seasonal. ■

## *Sacramento*



## **Congratulations John Wayne Airport!**

AMEC is a focused supplier of consultancy, engineering and project management services to the world's infrastructure, oil and gas, minerals and metals, clean energy, and environmental markets



Geomatrix and MACTEC are now AMEC. Our local contact number is: (949) 642-0245

[amec.com](http://amec.com)



# The Construction Zone

*JWA's Thomas F. Riley Terminal by the Numbers*

LED-lit wall sconces:	418
Benches:	146
Passenger check-in kiosks:	142
Trash cans in the Riley Terminal:	102
Pay phones:	90
Courtesy phones:	39
Drinking fountains:	27
Passenger-boarding bridges:	20
Family restrooms:	10
ATMs:	9
Oversize terminal clocks:	3

## 1,061

Number of piles driven for Parking Structure C



## Congratulations John Wayne Airport!



**PARKING CONCEPTS INC.**

Parking Concepts provides advanced parking solutions and is proud to be a valued partner of the John Wayne Airport for over 10 years!

949-753-7525



ParkingConcepts.com

### Central Utility Plant

## 175,000

lineal feet

or 33 miles, of electrical wiring to various locations throughout the Airport

### Parking Structure C

## 2,579

tons

of reinforcing steel

## 32,000

cubic yards

of cast-in-place structural concrete

## 38,000

cubic yards

of dirt excavated / exported from site

## 7 feet

Depth of excavation





## PARKING STRUCTURE C (CONTINUED)

**45** feet

Length of longest pile

**130** construction  
workers at job  
peak

## TERMINAL C

**3,500** tons

Weight of structural steel  
erected (2,400 pieces)

**13.2** tons

Weight of heaviest piece of  
structural steel



**232**

Number of BRBs\*  
installed in Parking  
Structure C

\*Buckling Restrained Braces (above) laterally brace, or support, critical sections of a multilevel structure where "bending" of the structure may occur during an earthquake. In the case of JWA's Parking Structure C and Terminal C, the BRB system will not only ensure maximum seismic stability, but also safety and efficiency of the structures.

## TERMINAL C (CONTINUED)

**15** miles  
of data  
cable

**40** miles  
of aboveground  
speaker wire

**200** miles  
of copper cable and  
close to 35,000 feet of  
fiber cable installed

**12,000** cubic  
yards

of cast-in-place structural concrete

**250**

workers at  
job peak

Affiliated With Mission Hospital



You know your financial risks.  
Do you know your health risks?

Mission Center for Longevity & Aesthetic Medicine is a new center for executive wellness affiliated with Mission Hospital. Our mission is to assist individuals in improving and maintaining their physical and mental health so that they can continue to live an active and healthy lifestyle as they age.

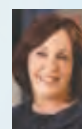
### Unique to Our Facility

- Comprehensive Cardio-Pulmonary Test (VO2 Max)
- Digital Mole Mapping for Skin Cancer
- Complimentary Insurance Billing

[www.missionlongevity.com](http://www.missionlongevity.com)  
Call for details: 949-364-2440



MISSION CENTER  
for LONGEVITY &  
AESTHETIC MEDICINE



Charlene L. Jessup  
Managing Director



James A. Heinrich,  
M.D., F.A.C.S.  
Medical Director



On weekdays, the departure and arrival curfew is 7:00 a.m.



Aviator Eddie Martin, circa 1923.

# Did You Know?

SNA is JWA's official airport designator, assigned by the Federal Aviation Administration. SNA stands for Santa Ana, the largest city near the Airport at the time it was given its designation.

"Jerry McGuire," the 1996 movie which starred Tom Cruise and Renee Zellweger, had a scene filmed in baggage claim at JWA.

The Transportation Security Administration screens approximately 5 million bags each year at JWA.

JWA serves more passengers per gate than any other airport in the country.

The Eddie Martin Terminal, built in 1967, was named after the pioneer aviator Eddie Martin 20 years after its opening. The terminal was later demolished and the new JWA Administration offices in Costa Mesa were named after him.

The federal government paid \$1 per year to the County of Orange for use of the airport during World War II.

John Wayne Associates commissioned sculptor Robert Summers to create a 9-foot-tall bronze statue of "The Duke" to commemorate the Airport's namesake. The statue, created at Hoka Hey Foundry in Dublin, Texas, was dedicated to the County on Nov. 4, 1982. Today, the bronze statue is located in the Thomas F. Riley Terminal on the Arrival Level.

On weekdays, airlines schedule their flights at 6:45 a.m. in order to depart as closely as possible to the 7:00 a.m. departure curfew.

The Lyon Air Museum at John Wayne Airport held its grand opening in December 2010. The museum features Gen. William Lyon's collection of historic World War II aircraft, civilian and military automobiles and military motorcycles. In 2011, more than 60 local elementary classes visited the museum.

Charles Lindbergh landed at the Eddie Martin Airport in 1928.



## Less Stress. More iShuttle.

Connect with the Irvine Business Complex and John Wayne Airport from the Tustin Station, or travel to the Irvine Spectrum Area from the Irvine Station.

The iShuttle will get you there.

949-72-GOBUS  
4 6 2 8 7



the irvine shuttle

irvineshuttle.net





The west side of JWA's airfield was used for Sunday **drag racing in the 1950s.**

Tony Aliengena, an 11-year-old San Juan Capistrano youth, was **the youngest pilot to depart JWA.** He flew 19,000 miles, circumventing the globe during the summer of 1988.

**The first Starbucks** at JWA opened in 1999 and was followed by two more Airport locations in 2005.

Phoenix is currently the **most popular destination** passengers fly to from JWA.

The Shinn 2150A, a two-seater aircraft, was built and sold in Santa Ana, Calif. **About 50 aircraft were built in a hangar at JWA** in the early 1960s. A second aircraft type, Phoenix, was also assembled at JWA; it was used in the 1965 movie "The Flight of the Phoenix" and flown by aviator Paul Mantz.

John Wayne Airport is proud to be the home airport for the Los Angeles **Angels** of Anaheim Major League Baseball team and Anaheim **Ducks** National Hockey League team.

In 2007, the **Stanley Cup** made a stop at John Wayne Airport following the Anaheim Ducks' win of the trophy that year.

The **California Air National Guard, 222nd Combat Communications Squadron** of Costa Mesa, reported for duty at JWA following the Sept. 11, 2001, terrorist attacks.

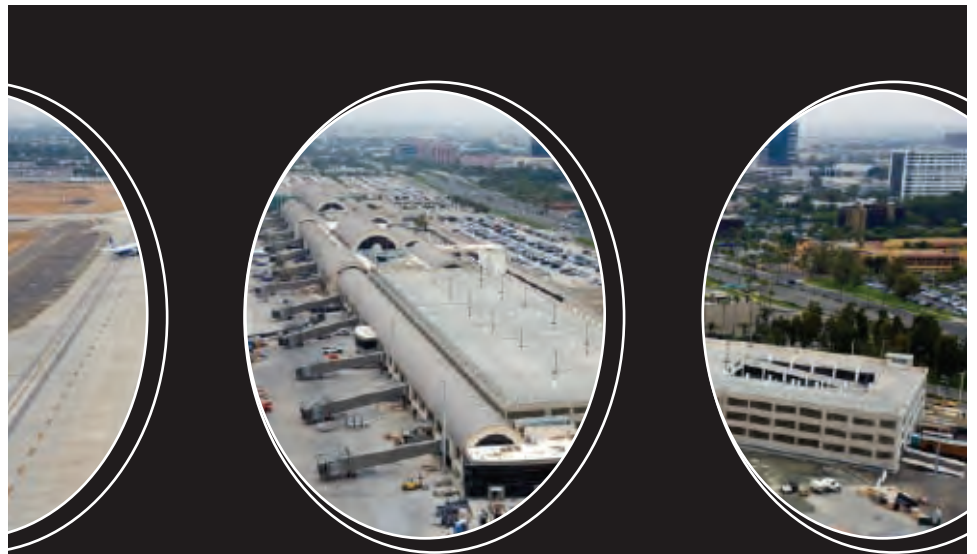
The Tallmantz Movieland of the Air International Flight and Space Museum, which was created by **aviators Paul Mantz and Frank Tallman**, was operated on airport property from 1963 to 1983. ■



Sunday  
drag racing  
at JWA in the '50s.



Phoenix  
is the most popular  
JWA destination.



We are proud to have provided  
MEP, Civil, Fire Alarm & Fire Protection  
Engineering Design Services for the  
John Wayne Airport Terminal Improvement Program.

# JACOBS

[www.jacobs.com/irvinemove/](http://www.jacobs.com/irvinemove/)



A round of golf at Wailea beckons.  
Photo: HTA, Kirk Lee Aeder

# The Clubs Scene

*How to take golf gear on your next getaway*



**R**AINBOW ENVIRONMENTAL SERVICES is a proud partner of John Wayne Airport.

We extend our "Greenest Congratulations" on the successful completion of the Terminal C Expansion Project.

Rainbow is an employee-owned recycling, reuse and waste collection company "Providing Greener Possibilities" to our Orange County customers.

We are helping John Wayne Airport attain sustainability by recycling more than fifty-five percent of its waste in 2010 with the eventual goal of reaching Zero Waste.



**RAINBOW**  
ENVIRONMENTAL SERVICES®  
Providing Greener Possibilities™

Huntington Beach | 714-847-3581  
[www.RainbowES.com](http://www.RainbowES.com)

**J**ohn Wayne Airport may be located within minutes of world-famous beach breaks and winter slopes, but surfboards and skis aren't the most popular checked sporting goods, golf clubs are.

If you're a golfer, and many traveling through JWA are, you'll love Continental Airlines' golf-equipment policy. Continental accepts one item of golf equipment per customer as checked baggage.

An item of golf equipment consists of the following:

- One golf bag
- Golf balls
- One pair of golf shoes

Continental\* currently flies non-stop to Oahu... and with more than 30 courses, including the world-famous Turtle Bay courses seen in televised play, Oahu is a golfer's paradise. And if you're flying Continental, you can be hitting fairways and greens in under six hours! Here are more details on flying with your clubs on Continental:

- All items must be properly encased in a suitable container. The golf bag must be covered or enclosed in a heavy, rigid carrying case.

- Continental is not liable for damage to golf equipment that is not contained in a hard-sided case.

- Excess Valuation may not be purchased for golf equipment that is not contained in a hard-sided case.

- If applicable, the first or second fee





Continental staff checking clubs.



TSA inspecting golf clubs.

applies to golf equipment.

- Golfing equipment containers measuring more than 62 inches (157 cm) (length/width/height) that contain other items in addition to or in place of appropriate golf equipment will be subject to an oversize fee.

- **Note:** All customers, including OnePass Elite members, who check a golf bag will experience a delay in receiving their bag at the baggage claim due to the way oversized items and sports equipment are required to be loaded, unloaded and delivered to baggage claim.

- **Golf clubs** in a hooded or soft-sided golf bag are conditionally accepted. Golf clubs that are transported in a hard, plastic travel case should be tagged with a regular tag. Golf equipment includes golf clubs, golf balls and golf shoes, contained in one bag. Overweight charges may apply.

For more information, visit [www.ocalr.com](http://www.ocalr.com). And as always, for more info on baggage and current guidelines, check with your airline before you fly.

*\*United Continental Holdings, Inc. became the holding company for both United and Continental upon close of the merger transaction in Oct. 2010. The two airlines will operate separately as they integrate key customer services, marketing activities and airport processes. For more information about the airlines, see [united.com](http://united.com) and [continental.com](http://continental.com). ■*

# COSTA MESA

style and substance.











EXPERIENCE WORLD-CLASS SHOPPING AT SOUTH COAST PLAZA

INDULGE IN SUMPTUOUS DINING AT TOP RESTAURANTS

ENJOY AWARD-WINNING BROADWAY PRODUCTIONS  
AT SEGERSTROM CENTER FOR THE ARTS

10 GREAT HOTELS. ALL WITHIN 10 MINUTES OF THE BEACH.

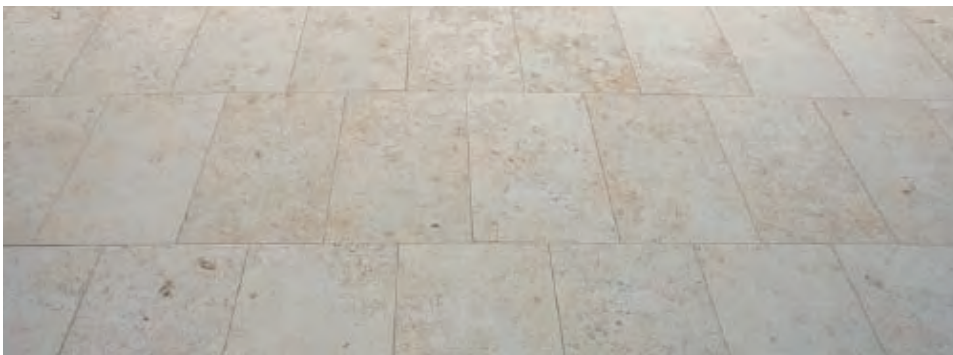
WE LOOK FORWARD TO WELCOMING MORE VISITORS TO COSTA MESA WITH  
THE EXPANSION OF JOHN WAYNE AIRPORT.

FOR MORE INFORMATION, VISIT OUR WEBSITE:  
[www.TravelCostaMesa.com](http://www.TravelCostaMesa.com)

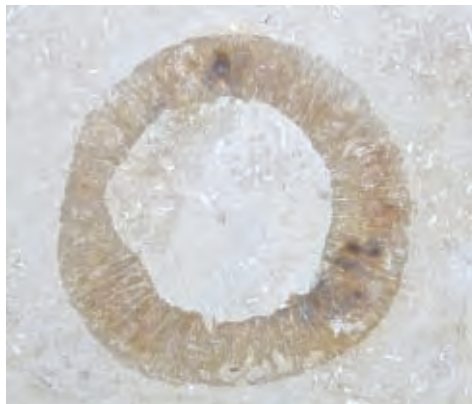
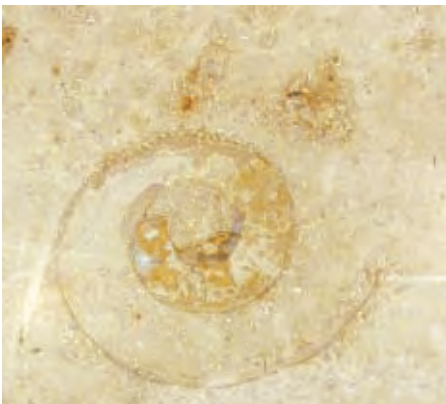




# Marble: the Global Traveler



Jura stone marble, used on the Riley Terminal at John Wayne Airport, features natural quartz veins and variable fossils (pictured below).



Since the beginning of modern civilization, man has lavishly adorned buildings with polished marble. To this day, utilizing marble and stone remains the hallmark of fine living.

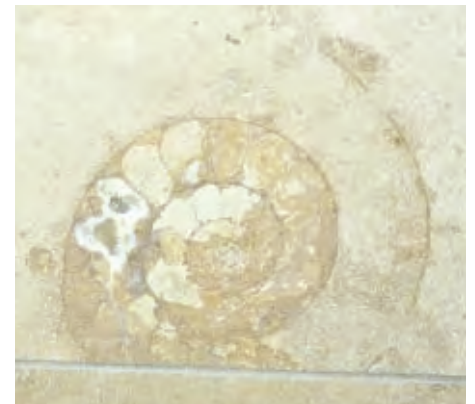
Marble is a metamorphic rock and is the result of extreme heat and pressure applied to limestone. The distinctive crystalline structure of marble allows it to be polished to a high gloss, which creates the illusion of depth.

John Wayne Airport's Riley Terminal uses Jura stone on both the exterior face of the building as well as on floor and wall surfaces on the interior of the facility. Jura stone is a limestone marble native to Europe and is mined in quarries in Germany. This stone has natural glass/quartz veins and variable fossils that are visible on its beige background.

While the limestone that makes up the Riley Terminal was mined in Germany, it was sent to Italy to be cut by specialized marble cutters, ensuring the precise and clean lines that have helped establish the Riley Terminal as a unique architectural landmark in Orange County.

Other items found in the Riley Terminal come from throughout the United States and the world:

- Translucent glass partitions (skycap locations) – Wisconsin
- Expansion joints – Pennsylvania
- Terminal clock mechanism – Ohio
- Ceramic tile (restrooms) – Italy
- Stainless steel claddings and surfaces – New York
- Cabinetry – Texas
- Light fixtures – Florida
- Carpet – North Carolina







# JWA... by the Numbers

**J**ohn Wayne Airport (SNA) is owned by the County of Orange and is operated as a self-supporting enterprise that receives *no general fund tax revenue*. The Airport serves approximately 9 million passengers annually, reaches 20 non-stop destinations in the United States and Canada and is served by nine commercial, two commuter passenger and two all-cargo airlines. With over \$.5 billion being invested in the Capital Improvement Program (CIP), there are extensive economic impacts with a net benefit to Orange County between \$.1 billion and \$.2 billion as a result of these investments. The CIP created 6,670 total jobs and for every one dollar invested in the Airport's Capital Improvement Program, more than two dollars are circulated back into the economy. That's more than \$.1 billion of benefit that this community will see as a result of the Airport's Capital Improvement Program.

## OPERATING BUDGET

(July 1, 2011- June 30, 2012):

\$88 million

## ANNUAL REVENUE 2010-2011:

\$113 million

## REVENUE FROM AIRLINES 2010-2011:

\$42.2 million

## REVENUE FROM PARKING 2010-2011:

\$36 million

## REVENUE FROM FOOD/BEVERAGE and NEWS/GIFT CONCESSIONS 2010-2011:

\$6.3 million

## REVENUE FROM RENTAL CAR CONCESSIONS 2010-2011:

\$13.1 million

## OUTSTANDING REVENUE BONDS 2010-2011:

\$251 million

## EMPLOYEES (2011):

179

## MARKET SHARE BY AIRLINE (8/31/2011):

Southwest, 34% ; American Airlines, 13%;  
Alaska, 11%, Delta, 11%; United, 10%;  
Continental, 8%; US Airways, 5%;  
Frontier, 4% WestJet, 2%

## TOTAL AIRPORT IMPROVEMENT COST:

\$543 million, including Terminal C, improvements to Terminals A and B, Parking Structure C and Central Utility Plant, plus initial enabling projects, including removal of Parking Structure B1.



## Helping California Move Forward

**Parsons Brinckerhoff** is a leader in California's infrastructure development. For more than 40 years, Parsons Brinckerhoff has been a go-to resource in Southern California for planning, rehabilitation of infrastructure, and design and program management of new and expanded airport facilities, both landside and airside.

For information on how we can assist you, please contact Robert Close, our vice president, at (714) 973-4880 or e-mail [close@pbworld.com](mailto:close@pbworld.com).

**PARSONS  
BRINCKERHOFF**

For career opportunities, or more information about Parsons Brinckerhoff, please visit [www.pbworld.com](http://www.pbworld.com)

# Central Utility Plant

State-of-the-art facility delivers reliability and cost-savings

**T**he nearly nine million passengers who traverse the Thomas F. Riley Terminal at John Wayne Airport each year will no doubt notice and appreciate the new facilities' many amenities, from the wide variety of concessions and more efficient passenger and baggage screening, to the improved parking access and even the four new art displays.

Less noticeable to travelers – but no less significant an improvement – is the new, \$30.5 million Central Utility Plant. Completed as a design-build project by West Coast Air Conditioning Co., this innovative facility supplies electrical power and chilled water to serve the air conditioning system for the entire airport 24/7/365.

## Immunity to blackouts

The new plant replaces an approximately 40-year-old, outdated facility. One of its most important features is that this cogeneration plant gives its owner, the County of Orange, the security of a consistently reliable source of power, making John Wayne Airport a sustainable facility that is virtually independent from Southern California Edison.

"Our cogeneration clients choose this path to obtain significant cost-savings," says West Coast Air's president, David Dudley, "but for the majority of them who own facilities where even a momentary interruption in power service can't be tolerated, reliability is the crucial factor."

At the airport's new plant, four natural-gas-fired engines run generators to produce 7.8 megawatt-hours of electricity – enough to power 6,000 average homes – allowing the airport to be mostly independent from Southern California Edison and thus stay online during a blackout.

"This reliability is an enormous plus," Dudley notes. "The plant has been operating since late last year and has proven itself several times already during power outages."



Construction of the Central Utility Plant was an extremely complex and enormous undertaking. West Coast Air and its subcontractors worked 107,290 man-hours, the equivalent of 50 man-years, to complete the project without a single lost-time accident.



Construction of the plant's 11,000-square-foot building began several months before the design of the mechanical and electrical systems it houses was complete. Prior to the start of construction, West Coast Air ensured that the site's existing, mature palm trees were safely relocated and remained undisturbed throughout the project's duration.

## Sustainable features

Power generation is just one of the Central Utility Plant's purposes. The other is the capture and reuse of the 950-degree exhaust heat emitted by the engines that drive the generators. This heat is used to create 240-degree water which in turn is used to drive two 535-ton absorption chillers that provide what is, essentially, free chilled water used to air condition the airport's various buildings.

With more than 725,000 square feet of space in airport buildings to air condition, three 750-ton centrifugal chillers powered by electricity generated at the plant are put into service to produce chilled water alongside the two absorption chillers.

## Cost-savings

Now that it's operational, the Central Utility plant is expected to save the County roughly \$2 million per year in electricity costs. In fact, Dudley notes, the cogeneration portion of the plant is expected to pay for itself in approximately ten years and to serve the airport's needs for another two decades or more after that.

Cost-savings began accruing long before the plant became operational, however. By electing to make this a design-build project rather than a traditional design-bid-build project, the County set the stage for the project to be completed more quickly. West Coast Air was able to begin construction of the foundations and walls of the 11,000-square-foot building that houses the plant's equipment while the mechanical and electrical systems were still in design, thus compressing the schedule.

Several significant cost-savings were realized long before construction began. During the project's six-month design phase, West Coast Air personnel brought their specialized expertise to bear, providing ideas that would result in the plant's paying for itself more quickly. Through value



engineering, the team was able to enhance the amount of heat to reclaim off exhaust – so-called free heat – and provided an additional 150 tons of free chilled water by this heat-reclamation process.

During its constructability reviews of the project's design, West Coast Air focused on how to build the new plant while allowing the entire airport to remain operational throughout the 14-month construction schedule. Originally the County had contemplated a separate switching station; however, thanks to West Coast Air's input, this element was deleted from the scope for a seamless transition from the old central plant to the new – and for a savings of nearly \$500,000 thanks to the elimination of unnecessary work.

"From the project's inception, West Coast Air's management team explained to us exactly what needed to happen in order for us to get what we wanted," says John Wayne Airport Project Manager Rick Cathey. "In many instances, they interpreted what we wanted before we even knew what it was.

"When construction was underway, we stepped aside and trusted them to do what it took to make it all happen. That's why I call them the get-out-of-the-way contractor," he jokes.

#### Cogeneration experts

In response to the 2001 rolling blackouts throughout California, the County of Orange instituted a program to upgrade the central plant functions of the Santa Ana Civic Center to reduce dependence on the local utility power grid. The County tapped West Coast Air for the project, and in 2009 the company completed the construction of a \$30 million, 10.4-megawatt cogeneration plant that serves 16 County buildings in the heart of downtown Santa Ana.

West Coast Air's highly successful performance on that project, which was brought in on time and under budget, was repeated with the airport project. As Dudley remarks, "We are

proud to count the County of Orange as a repeat client for cogeneration facilities."

In fact, West Coast Air is a dominant leader in the construction of these types of facilities. Founded by David Dudley's father, Fred Dudley, in 1962, the company built its first cogeneration plant in 1978. In its nearly 50-year history – the company will celebrate that milestone anniversary next year – West Coast Air has constructed more than 100 central and cogeneration plants.

#### Specialized expertise

As the prime design-build contractor for the airport's central plant, West Coast Air enlisted Syska Hennessy Group as its design consultant. In so doing, it reunited the team that designed and constructed the County of Orange's earlier cogeneration project.

What's more, all six men on West Coast Air's Central Utility Plant project management team worked together on the earlier project as well – and, Dudley is proud to point out, they have a combined total of 172 years of construction-industry experience. He also notes that every project that West Coast Air takes on is managed by a corporate officer: He served as project executive for both Orange County projects, with company Vice President John Krueger as project manager.

For the airport project, West Coast Air subcontracted the electrical work to Baker Electric, a company with which the general contractor has teamed many times on cogeneration and central plant projects. Baker's work included running 175,000 lineal feet – 33 miles – of electrical wiring from the plant to various locations throughout the airport.

Other key players were Cummins Power Generation, for provision of the heat reclamation and emission systems, Parsons Transportation Group for program management and Barnhart Balfour Beatty for construction management.

#### Deceptive name

"Don't be fooled by our company's name," Dudley comments. He's referring to the fact that

West Coast Air is a general contractor, not solely a builder of mechanical and electrical systems, and that the company builds entire school campuses from the ground up. With an average of 120 employees working in eight trades, West Coast Air employs as many as 170 workers in the summer months, when school construction peaks. Currently, the general contractor is in the middle of a \$150 million renovation and upgrade of nine schools in the Los Alamitos Unified School District, among other school projects.

The company's third area of specialty is in energy reduction for schools, military facilities, cities and counties. This work entails the replacement of air-conditioning and lighting systems, the provision of thermal and photovoltaic solar systems, and the use of alternative power-generation systems.

Dudley brushes off the suggestion that West Coast Air should consider changing its name, saying, "We do just fine the way we are." That's a bit of an understatement, however. The company remains busy through both good and bad times in the construction industry, Dudley notes, and its network of clients – who have confidence in West Coast Air's ability and insistence upon perfection – allow the general contractor to thrive while others in the industry fail.

What's more, nearly 90 percent of West Coast Air's business comes from repeat clients who appreciate that the company is what Dudley calls "an owner's contractor." By this he means that, in an industry too often characterized by adversarial relationships, West Coast Air consistently strives to provide the ultimate system an owner can have, on or ahead of schedule and often under budget.

"We focus on developing creative solutions, on working in a collaborative spirit with every owner, and on adding value to every project we construct," Dudley says.

It's a formula for success. "I would have them back in a heartbeat," JWA's Cathey says.



Thousands of cars and commercial trucks going into the airport each day traveled past the horseshoe-shaped site where the central plant was constructed, requiring West Coast Air to perform all heavy rigging between midnight and 4:00 a.m. and making the maintenance of smooth traffic flow a daily challenge. With no storage space on the site, the contractor employed just-in-time delivery of materials for immediate installation.



The airport's Central Utility Plant is the most recent of more than 100 central and cogeneration plants constructed by West Coast Air. Others include a seven-megawatt cogeneration plant and three central plants at Marine Corps Air Ground Combat Center Twentynine Palms; a \$15 million, 4.3-megawatt cogeneration plant at Naval Medical Hospital San Diego; and numerous plants at schools, colleges and universities throughout Southern California.



Aerial view of John Wayne Airport, showing new connecting bridge and marketplace and new North Commuter Hold Room.

# A Better Way to Fly

By Keith Thompson, Principal, Gensler; Aviation and Transportation Practice Area Leader; and Project Principal, JWA Improvement Program

When John Wayne Airport (JWA) originally asked Gensler to design the Thomas F. Riley Terminal in 1985, they wanted a terminal that offered passengers and Orange County residents a better travel experience. Since its opening in 1990, I'm proud to say that the Riley Terminal has become recognized for its clear organization and architectural character. In a post-9/11 travel era where increased security is the new normal, that's high praise.

Today, passengers judge airports on the quality of their personal travel experiences. Good terminals minimize hassle and provide necessary amenities, while the best ones capture the spirit and excitement that was integral to air travel in years past. We captured that spirit in our original design, and we're honored to continue our work with the design of the new Terminal C. Our goal is simple: We're looking to elevate the passenger experience in a pat-down world.

When JWA first began work with us on Terminal C, they asked us to integrate the new structure seamlessly into the existing airport. We maintained our original goal to offer travelers a better travel experience and retained the architectural style and color palette from the Riley Terminal. The 280,000-square-foot terminal increases John Wayne Airport's capacity from 8.4 million annual passengers (MAP) to 10.8 MAP and has the capacity to operate domestic and international flights.

## Putting the passenger first

Our original design for the Riley Terminal is predicated on putting passengers first, and looking for many opportunities to make air travel clear, comfortable and easy. We accomplished that by emphasizing intuitive way-finding

through spacious, accessible pathways. That design strategy continues to receive rave reviews from passengers, so the challenge facing Gensler with Terminal C was to find a way to replicate that strategy while building around an existing terminal, conforming to building codes that had significantly changed and ensuring the construction did not impact existing airport operations.

I am proud to say that we were able to meet all of those criteria and deliver the terminal on time and under budget. The Gensler design team re-

# Gensler

sponsible for this feat included several individuals who worked on the Riley Terminal and had a strong sense of the airport's history and the challenges inherent to the structure.

Terminal C replicates the barrel-vaulted ceilings used in the Riley Terminal, providing a dramatic visual contrast to the horizontal simplicity of an adjacent parking structure. Departing passengers are greeted by an entrance that is manageable and easy to navigate. Departure facilities are located on the upper level and arrival accommodations on the lower level, separating the two passenger groups to minimize foot traffic and economize certain building functions and overall square footage.

## A standardized check-in

One of the problems commonly found in terminals is the inconsistency and confusing nature of check-in procedures. Gensler's design team alleviated this problem in Terminal C by installing common-use terminal equipment (CUTE) that

standardizes check-in. Now the airport operates check-in for all airlines, meaning there is a single straightforward procedure that gets passengers to their gates in as little time as possible.

One of the unique aspects of Gensler's original design for John Wayne Airport was the idea that the baggage claim area was an important space worthy of attention rather than just a place to stick a system of conveyor belts. We built upon this idea in Terminal C, designing the baggage claim area in the style of the grand concourses found in old European railroad stations. A huge 70-foot-high vaulted roof admits a large amount of light, a characteristic found in few baggage claim areas, creating an exciting and unique sense of arrival that welcomes passengers to Southern California. The layout helps passengers grab their bags and proceed to the ground transportation areas with ease.

## Retail and hospitality

Another important point of emphasis with Terminal C was to design a retail and concessions area that was not only suitable in terms of size and location but harmonious with the surrounding architecture. Since passengers now tend to arrive at airports earlier and spend the majority of their time in terminals waiting for flights, it is imperative that terminals provide a wide range of food and retail options. Airports heavily depend on the revenue generated from their retail and concession spaces, so ensuring that Terminal C could attract quality concessionaires was a priority for JWA officials.

To do this, Gensler leveraged the expertise of the firm's renowned retail and hospitality practice areas. Our designers created an open space with a neutral color palette that allows



individual concessionaires to add colors which sync up with their particular brands. Shades of beige/sand-colored stone tile create a comfortable, appealing aesthetic. Each kiosk is designed with its specific location in mind and complements the vaulted concourse. From local coffee shops to bars to California restaurants, Terminal C offers something for every passenger. Our design also paid close attention to the North and South Commuter hold rooms, which replace temporary facilities not suitable for long-term use. The North Hold Room's visibility from Interstate 405 allows it to serve as a beacon for arriving passengers, and given the airport's stature as an important piece of public architecture, we designed the North Hold Room to reflect the quality and vision of the airport. Finally, Terminal C echoes the commitment to sustainability and environmental stewardship found throughout California. The team called for LED lighting fixtures throughout Terminal C that reduce energy use per square foot by 50 percent.

#### Building on a legacy

My colleague David Loyola, who served as the project architect and design director, said it best when he told *California Construction* magazine, "We feel like we're coming back 20 years later and improving on the current design." Gensler has a long-standing relationship with John Wayne Airport and Orange County, and we wanted our work on Terminal C to reflect the history of JWA while pointing to the future of air travel. We hope the terminal captures the distinct spirit of Southern California, and that residents of Orange County are proud to call this terminal their own.

#### About the Author

Keith Thompson has nearly 30 years of planning and design experience assignments at more than 60 airports worldwide. His experience in aviation facility planning and design includes project and program leadership with an emphasis on terminal and landside design and planning. Thompson provided design and technical leadership on a variety of recent Gensler terminal projects at John Wayne Airport, LAX, Detroit, Atlanta Hartsfield, Palm Springs Airport, San Jose International Airport, Chicago O'Hare and San Diego's Lindbergh Field.



As past Terminal Committee chairman and past president of the Airport Consultants Council, he has contributed to the development of national airport security policy as a participant in Transportation Security Administration conference calls and through participation in the efforts of the FAA's Volpe Research Center.



Interior Baggage Claim area serving the new Terminal C.

## Congratulations for making Terminal C a smooth ride...



...and we know a thing or two about smooth rides.



[www.YellowCab.com](http://www.YellowCab.com)

**714-999-9999**



[www.CAYellow.com](http://www.CAYellow.com)

**877-Yellowcab**





St. Jude Medical Center, Southwest Patient Tower – Fullerton, Calif.



John Wayne Airport Parking Structure C - Santa Ana, Calif.

# Building a Legacy in Orange County Since 1997

**S**winerton Builders has been a forward-thinking company that strategically seizes opportunities and executes every project with passion and relentless accountability, since its founding in 1888. The Swinerton Family of Companies provides commercial construction and construction management services throughout the Western United States and is a 100% employee-owned company. Recognized nationally, the Swinerton Builders Orange County and Inland Empire division has contributed significantly to the continued growth in Southern California. We are the proud builder of the Parking Structure at Terminal C at John Wayne Airport, among many other landmark projects that are building a better future for the local community.

As one of the top ten general contractors in the area since their office was established in Irvine in 1997, they are devoted to the region with a passion for delivering the highest-quality product through innovation, integrity and experience.

Their successful history is backed by their ability to stay ahead of trends, and the flexibility and financial strength of their company. From their first green roof in 1971 to their current 277 LEED AP® strong staff, Swinerton has long been at the forefront of green building and remains a national leader in sustainability with the completion of over 87 LEED projects valued at \$1.97 billion.

Their cutting-edge use of technology includes extensive Building Information Modeling (BIM) and a stellar Virtual Design & Construction

team. Their BIM tools and preconstruction expertise allow project participants to see the project unfold over the planned course of construction – before ground is broken. Swinerton offers the right blend of experience and cutting-edge technology to meet today's and tomorrow's increasingly complex projects. Swinerton also specializes in the latest in project delivery methods and contracts including design-build and Integrated Project Delivery, and is fully prepared for the next advancements in the industry.

Today, the Swinerton Builders Orange County and Inland Empire division is achieving remarkable success in the industry across a wide range of markets with a focus on strong and newly emerging markets, including healthcare, hospitality, education, tenant improvements, mission critical/data centers and renewable energy.

Our longevity is not a result of the structures we've built. Our record of innovation and excellence is not to be found in our archives. Our unquestioned integrity is not a product of words engraved on a plaque. These qualities and successes can only be attributed to our one true asset – our people. From our chairman to our frontline project teams, we work diligently and passionately every day to be the best builders.

*To learn more about Swinerton Builders, contact Tom Bethmann, business development manager, at 949.622.7000 or email him at [tbethmann@swinerton.com](mailto:tbethmann@swinerton.com).*



WorldMark Anaheim Club – Anaheim, Calif.



Soka University of America – Aliso Viejo, Calif.



Bank of New York Mellon Tenant Improvement – Newport Beach, Calif.



# Friends of John Wayne Airport



**Dorsey & Whitney LLP**  
congratulates John  
Wayne Airport on its  
new expansion

Dorsey & Whitney LLP  
600 Anton Boulevard • Suite 3000 • Costa Mesa, CA 92626



Congratulations to  
John Wayne Airport

ARCADIS is proud to  
be the Construction  
Manager on the terminal  
expansion project

[www.arcadis-us.com](http://www.arcadis-us.com)



**Congratulations  
to JWA**

IDS Group is proud to be the  
structural engineer of the  
terminal expansion project.

1 Peters Canyon Road, Ste. 140  
Irvine, CA 92606  
949.387.8500

[www.idsgi.com](http://www.idsgi.com)



**Quinn Power Systems  
congratulates  
John Wayne Airport.**

**Thank you for  
selecting Caterpillar  
for your Emergency  
Electric Power.**

[www.quinnpower.com](http://www.quinnpower.com)

[www.airportengineering.com](http://www.airportengineering.com)



**John Wayne Airport**  
We are proud to  
congratulate the  
project team!



Congratulations to  
John Wayne Airport

Lynn Capouya Inc. is  
proud to be part of the  
design team

Past • Present • Future

949.756.0150

[www.lcapouya.com](http://www.lcapouya.com)

**BUCKNAM  
& ASSOCIATES, INC**

Bucknam & Associates  
congratulates John  
Wayne Airport

We are proud to be part  
of your Pavement  
Management team.

[www.bucknam.net](http://www.bucknam.net)

SIDLEY AUSTIN LLP  
**SIDLEY**

Serving America's  
Public Finance Needs  
For Almost  
100 Years

[www.sidley.com](http://www.sidley.com)

**R.D. OLSON  
CONSTRUCTION**

Proud to be Part  
of the  
JWA Expansion Team

[www.rdolson.com](http://www.rdolson.com)  
[tcromwell@rdolson.com](mailto:tcromwell@rdolson.com)

Congratulations to  
John Wayne Airport!

From Signature Flight Support,  
Proud Provider of Executive  
Aviation Services at JWA



[www.signatureflight.com](http://www.signatureflight.com)  
(949) 263-5800



**Congratulations  
John Wayne Airport!**

We are proud to be your  
Program Controls Manager  
for the program.

[FGOULD.COM](http://FGOULD.COM)



We are proud to be a part  
of a successful project like  
John Wayne Airport.

Martin Integrated has been one  
of the top specialty ceiling  
contractors in Southern California  
since 1989

*Raising the Bar on Specialty Ceilings*

714-998-9100  
[www.martinintegrated.com](http://www.martinintegrated.com)

**EXCEL PAVING COMPANY**  
A GENERAL ENGINEERING CONTRACTOR



(562) 599-5841

Excel Paving is proud to be part of the  
construction teams rebuilding John Wayne Airport.  
We salute the accomplishments and professionalism  
of the Airport Authority design and  
inspection teams.

**ORANGE COUNTY  
BUSINESS JOURNAL**  
*The Community of Business*

[www.ochj.com](http://www.ochj.com)

# ORANGE COUNTY BUSINESS JOURNAL

18500 Von Karman Ave., Suite 150, Irvine, CA 92612  
(949) 833-8373 • FAX (949) 833-8751 [www.ocbj.com](http://www.ocbj.com)

## PUBLISHER

RICHARD REISMAN [reisman@ocbj.com](mailto:reisman@ocbj.com) | ext. 219

## VICE PRESIDENT, ASSOCIATE PUBLISHER

LAURA GARRETT [garrett@ocbj.com](mailto:garrett@ocbj.com) | ext. 210

## ADVERTISING SALES MANAGER

STEVE GALL [gall@ocbj.com](mailto:gall@ocbj.com) | ext. 221

## NATIONAL SALES MANAGERS

BRENDA BALSIGER [balsiger@ocbj.com](mailto:balsiger@ocbj.com) | ext. 220

AMY SFREDDO [sfreddo@ocbj.com](mailto:sfreddo@ocbj.com) | ext. 246

## ACCOUNT MANAGERS

TERI AIKIN [aikin@ocbj.com](mailto:aikin@ocbj.com) | ext. 211

SHELDON ASCHER [ascher@ocbj.com](mailto:ascher@ocbj.com) | ext. 217

CORINNE DEKKER [dekker@ocbj.com](mailto:dekker@ocbj.com) | ext. 228

BOBBY DORMAN [dorman@ocbj.com](mailto:dorman@ocbj.com) | ext. 201

CAROL FOX [fox@ocbj.com](mailto:fox@ocbj.com) | ext. 213

ELIZABETH GAXIOLA-WATT [watt@ocbj.com](mailto:watt@ocbj.com) | ext. 214

KIM LOPEZ [lopez@ocbj.com](mailto:lopez@ocbj.com) | ext. 263

ALECK ROJAS [rojas@ocbj.com](mailto:rojas@ocbj.com) | ext. 215

## SUPPLEMENTS & EVENTS DIRECTOR

LORNA CORPUS SULLIVAN [lsullivan@ocbj.com](mailto:lsullivan@ocbj.com) | ext. 227

## SUPPLEMENTS EDITOR

JULIE VO [vo@ocbj.com](mailto:vo@ocbj.com) | ext. 270

## ADVERTISING COORDINATOR

JANNA WADE [wade@ocbj.com](mailto:wade@ocbj.com) | ext. 223

## EVENTS COORDINATOR

JAYNE KENNEDY [kennedy@ocbj.com](mailto:kennedy@ocbj.com) | ext. 209

## MARKETING COORDINATOR

MICHAEL STRACHAN [strachan@ocbj.com](mailto:strachan@ocbj.com) | ext. 212

## CIRCULATION COORDINATOR

KELLY BROWN [brown@ocbj.com](mailto:brown@ocbj.com) | ext. 238

## CIRCULATION SPECIALIST

ABBY MADAIN [madain@ocbj.com](mailto:madain@ocbj.com) | ext. 243

## CIRCULATION MARKETING MANAGER

MARTINE EVANS [evans@ocbj.com](mailto:evans@ocbj.com) | ext. 237

## PRODUCTION DIRECTOR

RICHARD LOYD [loyd@ocbj.com](mailto:loyd@ocbj.com) | ext. 245

## GRAPHIC ARTIST

MARTIN NILCHIAN [nilchian@ocbj.com](mailto:nilchian@ocbj.com) | ext. 253

## DIRECTOR OF ADMINISTRATION

JANET COX [cox@ocbj.com](mailto:cox@ocbj.com) | ext. 203

## JOHN WAYNE AIRPORT:

### MANAGER, PUBLIC RELATIONS /

### PUBLIC INFORMATION OFFICER

JENNY WEDGE [jwedge@ocair.com](mailto:jwedge@ocair.com)

### PUBLIC AFFAIRS SPECIALIST

DANIELLE KATZ [dkatz@ocair.com](mailto:dkatz@ocair.com)

*Thanks to the Special Publications Team at the OCBJ for their work on the JWA Advertising Supplement: Steve Gall, Sheldon Ascher, Lorna Corpus Sullivan, Richard Loyd, Martin Nilchian and Michael Strachan.*

“The airport runway  
is the most important  
main street in any town.”

Norm Crabtree

*Former aviation director for the state of Ohio*


The Orange County Business Journal  
congratulates the builders and supporters  
of John Wayne Airport's new Terminal C,  
Parking Structure C and other innovative  
milestones of the Airport Improvement Program.

ORANGE COUNTY BUSINESS JOURNAL

*The Community of Business.™*

[www.ocbj.com](http://www.ocbj.com)





Your partner in business.

**Good health is always good for business.** Which is why we encourage employers who choose our plan to promote preventive health and programs that increase physical activity and decrease stress in the workplace. And to support you, we offer tools that encourage healthier living and online services like e-mailing your doctor's office and viewing most lab results, so employees get what they need without taking time away from work. We know that keeping employees healthy and happy is not only good for your bottom line, it's good for theirs.

Good health is always good for business. Let us be your partner in health.

For more information, visit **kp.org** or contact your Kaiser Permanente broker or sales representative.



# COME 'C' WHAT'S NEW AT JOHN WAYNE AIRPORT...



## CELEBRATING THE OPENING OF TERMINAL C

With six new gates, more security checkpoints, a new parking structure with over 2,000 spaces, new food and retail options and many exciting passenger amenities, we are proud to announce the opening of Terminal C.

Welcome to John Wayne Airport, Orange County – your world-class aviation gateway.



[www.ocair.com](http://www.ocair.com)



Scan with your mobile  
device to learn more.