

NOISE ABATEMENT PROGRAM

QUARTERLY REPORT

For the period:
January 1, 2020 through March 31, 2020

Prepared in accordance with:

AIRPORT NOISE STANDARD
STATE OF CALIFORNIA

California Administrative Code Title 21,
Chapter 2.5, SubChapter 6:
Division of Aeronautics
Noise Standards

Submitted by:



Barry A. Rondinella, A.A.E./C.A.E.
Airport Director
John Wayne Airport, Orange County



INTRODUCTION

This is the 189th Quarterly Report submitted by the County of Orange in accordance with the requirements of the California Airport Noise Standards (California Administrative Code Title 21, Chapter 2.5, SubChapter 6: Division of Aeronautics Noise Standards). Effective January 1, 1986, the criteria for defining "Noise Impact Area" was changed from 70 dB to 65 dB Community Noise Equivalent Level (CNEL). Under this criteria, John Wayne Airport currently has a "Noise Impact Area."

NOISE IMPACT SUMMARY

Caltrans' Aeronautics Program has established guidelines in the California State Noise Standard to control residential area noise levels produced by aircraft operations using the State's airports. Under those guidelines, residential noise sensitive areas exposed to an average Community Noise Equivalent Level (CNEL) of more than 65 dB define the "Noise Impact Area." John Wayne Airport uses ten permanent remote noise monitoring stations (NMS) located in Newport Beach, Santa Ana, Tustin and Irvine to measure noise levels, at the following locations:

MONITOR STATIONS

NMS-1S: Golf Course, 3100 Irvine Ave., Newport Beach	NMS-6S: 1912 Santiago, Newport Beach
NMS-2S: 20162 S.W. Birch St., Newport Beach	NMS-7S: 1131 Back Bay Drive, Newport Beach
NMS-3S: 2139 Anniversary Lane, Newport Beach	NMS-8N: 17372 Eastman Street, Irvine
NMS-4S: 2338 Tustin Ave., Newport Beach	NMS-9N: 1300 S. Grand Avenue, Santa Ana
NMS-5S: 324 ½ Vista Madera, Newport Beach	NMS-10N: 17952 Beneta Way, Tustin

The map in Figure 1 shows the general location of each permanent remote monitor station.

Figure 2 shows the Airport's "Noise Impact Area" for the previous year (April 1, 2019 - March 31, 2020). The Figure 2 information was developed by Landrum and Brown, in consultation with John Wayne Airport. CNEL values measured for the period and current digitized land use information were utilized to calculate the land area acreages, number of residences and estimated number of people within the "Noise Impact Area".

**FIGURE 1
NOISE MONITORING STATIONS (NMS)
LOCATION MAP**

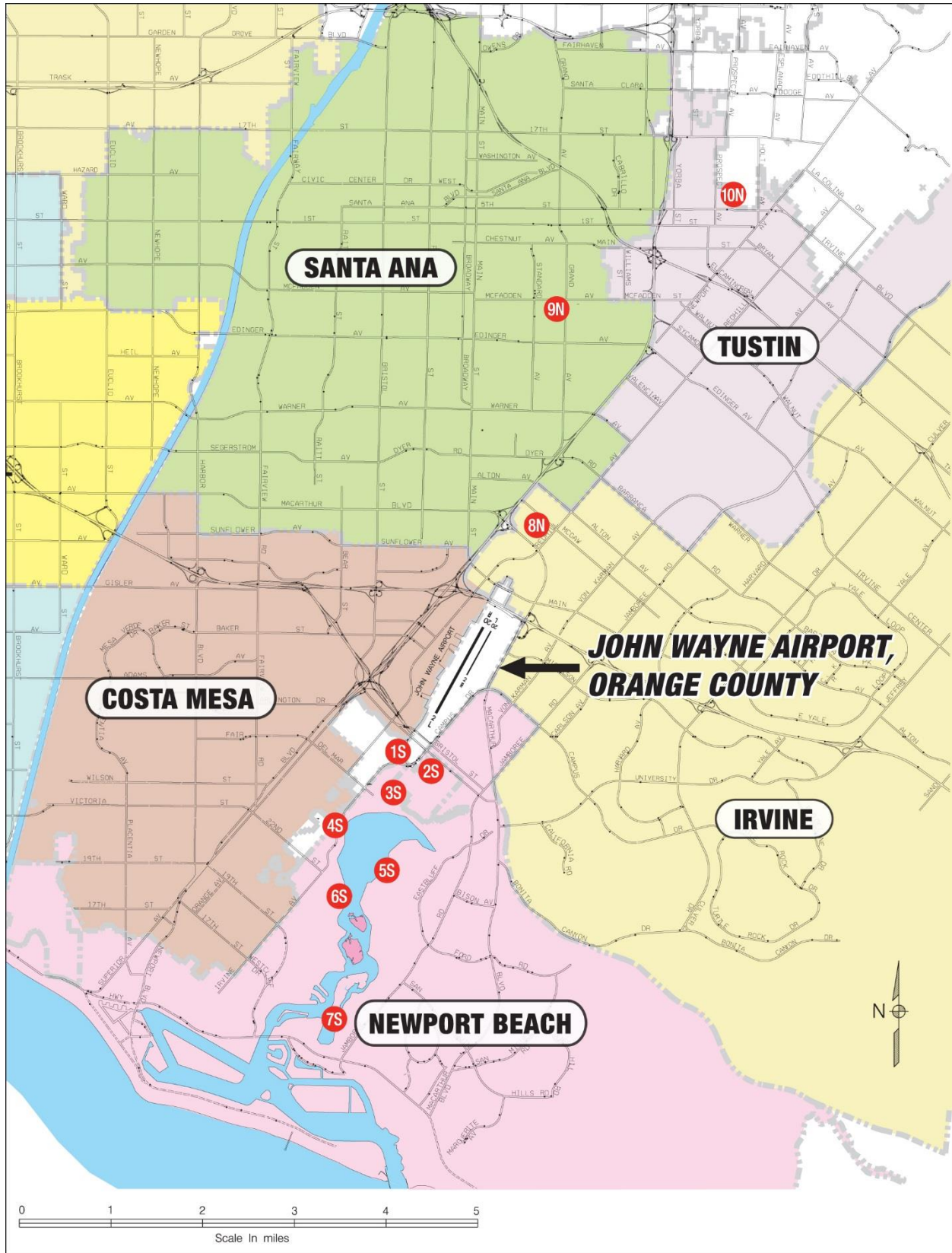
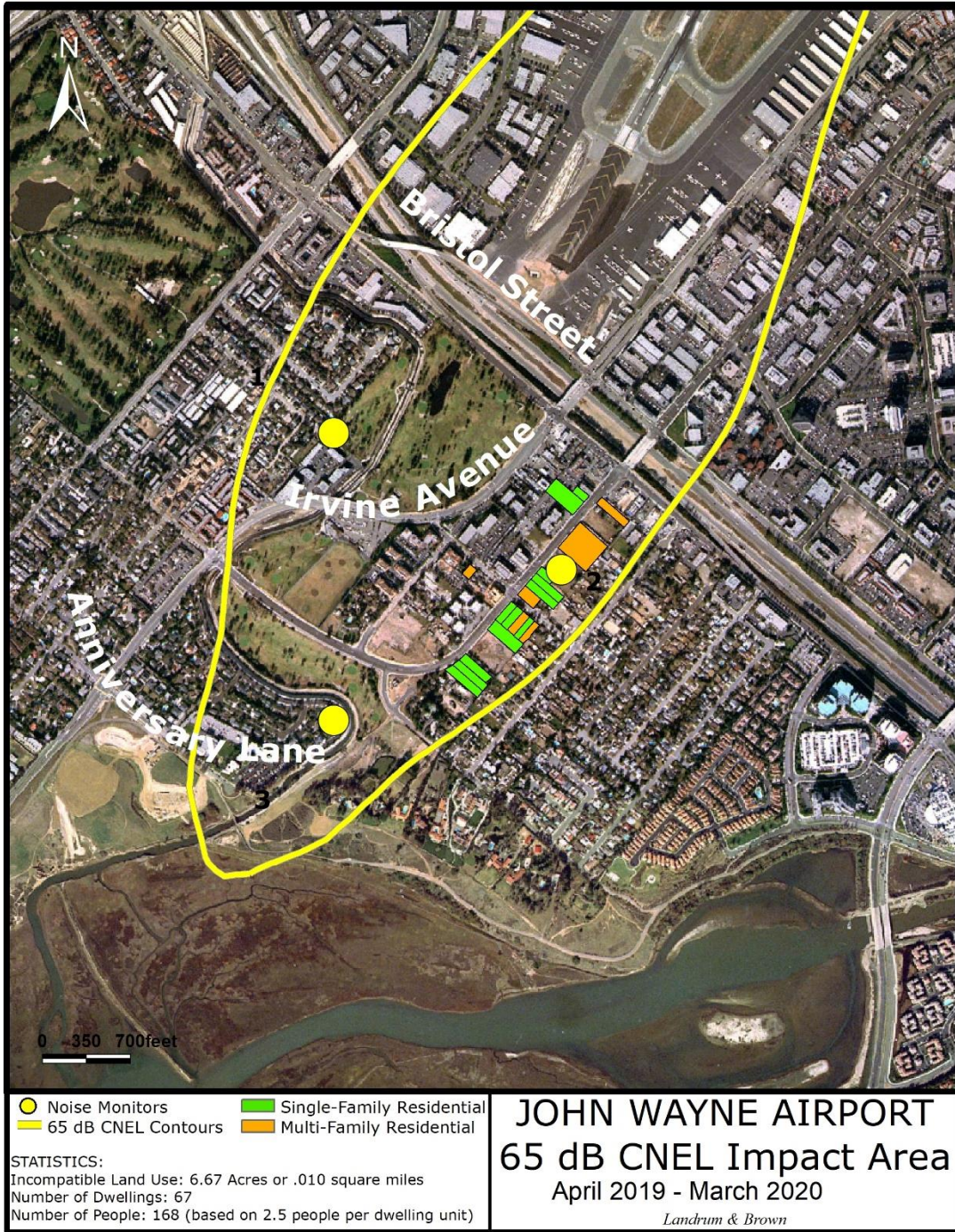


FIGURE 2



AIRCRAFT TRAFFIC SUMMARY

The Airport traffic summary for this quarter is shown in Table 1 below. Air Carrier operational count histories and average daily departure counts are illustrated in Tables 9 & 11.

TABLE 1
LANDING AND TAKEOFF OPERATIONS
January - March 2020

Period	Air Carriers		GA Jet (1)	Total Operations (2)	Average Daily Jet Operations
	Jet	Prop			
January	7,466	0	2,940	22,685	336
February	6,846	0	2,993	19,412	339
March	6,083	0	1,894	17,020	257
First Quarter	20,395	0	7,827	59,117	311
Twelve Months 04/01/19 - 03/31/20	92,682	0	35,166	289,938	349

NOTE: (1) GA Jet figures include a 5% factor for operations not identified by the JWA noise monitor stations.

(2) Counts in this column are based upon records provided by the local FAA representatives.

COMMUNITY NOISE EQUIVALENT LEVELS

The monthly, quarterly and twelve month Community Noise Equivalent Level (CNEL) average values for each monitor station are shown in Table 2, while daily CNEL values are shown in Tables 3 through 5. Insufficient data is indicated by “#N/A” entries in each table. Also, “*#N/A” entries in each table indicate there were no aircraft related noise events.

Average Single Event Noise Exposure Level (SENEL) values for Air Carrier and General Aviation Jet aircraft are shown in Tables 6 through 8.

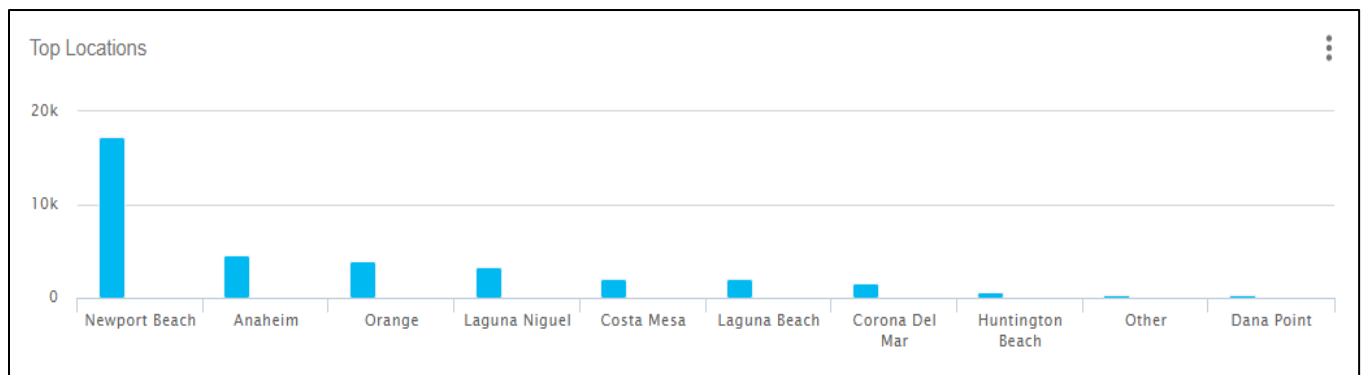
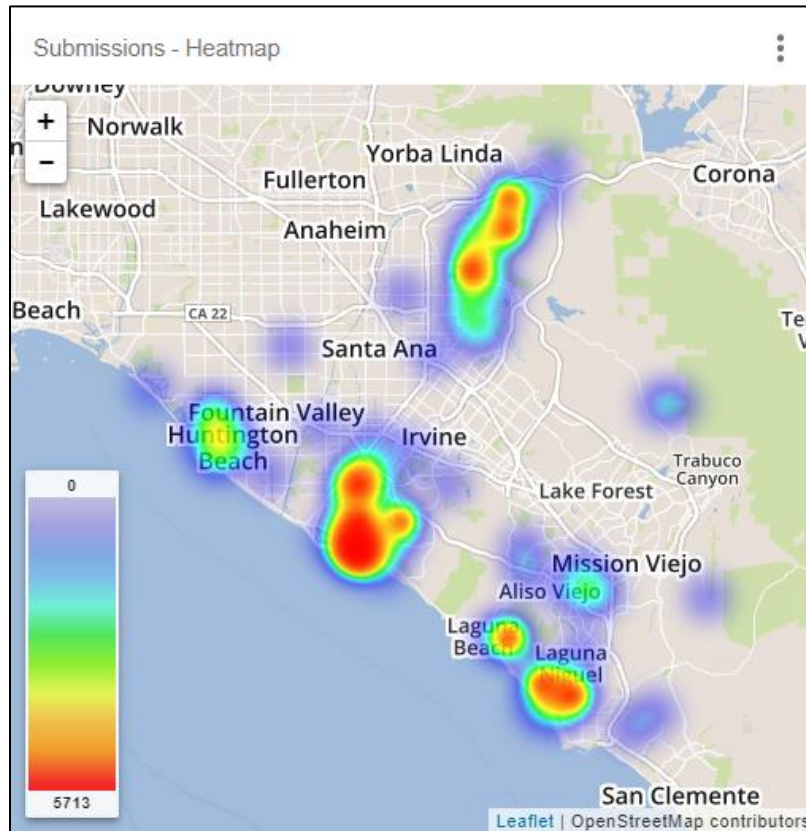
ACOUSTICAL INSULATION PROGRAM

Four hundred eighteen residences in the Santa Ana Heights area have been sound attenuated and an avigation easement reserved through the County’s Acoustical Insulation Program, which closed in December 2009. The County has also acquired 46 residences as part of the Purchase Assurance Program, many of which were acoustically insulated, an avigation easement reserved and then resold. Among these County acquired homes, those located within areas designated for Business Park uses were razed, avigation easements were reserved, and the land resold for compatible Business Park uses. A total of 464 residences in the Santa Ana Heights area have been purchased or otherwise made compatible through the County’s Purchase Assurance and Acoustical Insulation Programs. Sixty-seven dwelling units in Santa Ana Heights remain in the “Noise Impacted Area” (within 65 dB CNEL contour).

COMPLAINT TOTALS (January 1, 2020 - March 31, 2020)

The Airport's Access and Noise Office receives and investigates noise complaints from local citizens and all other sources. During the January 1, 2020 through March 31, 2020, the Office received 36,259 complaints from local citizens. This is a 9.8% decrease from the 40,212 complaints received last quarter. It is a 60.5% increase from the 22,594 complaints received during the same quarter last year. Figure 4 shows the distribution of the quarterly complaints from local communities.

**FIGURE 3
REPORTED NOISE EVENT SUBMISSIONS**



Note:

- Newport Beach – 17,270 submissions from 67 different points of contact.
- Anaheim – 4,571 submissions from 8 different points of contact.
- Orange – 3,907 submissions from 13 different points of contact.
- Laguna Niguel – 3,329 submissions from 5 different points of contact.
- Costa Mesa – 2,086 submission from 9 different points of contact.
- Laguna Beach – 2,081 submissions from 4 different points of contact.
- Corona Del Mar – 1,548 submissions from 9 different points of contact.
- Huntington Beach – 572 submissions from 17 different points of contact.
- Other – 386 submissions from 42 different points of contact.
- Dana Point – 349 submissions from 1 point of contact.

TABLE 2
LONG TERM MEASURED LEVELS
Aircraft CNEL from 04/01/19 through 03/31/20
Values in dB at Each Site

Period	NMS Site									
	1S	2S	3S	4S	5S	6S	7S	8N	9N	10N
Apr 2019	68.1	67.2	66.6	60.3	59.6	61.1	57.4	68.6	42.2	57.7
# Days	30	30	30	30	30	30	30	30	25	30
May 2019	68.3	67.5	66.8	60.6	59.8	61.2	57.9	69.1	43.3	58.3
# Days	31	31	31	31	31	31	31	31	29	31
Jun 2019	68.5	67.6	67.1	60.3	59.2	60.8	57.0	68.9	41.4	57.7
# Days	30	30	30	30	30	30	30	30	25	30
Q-2 2019	68.3	67.5	66.8	60.4	59.5	61.0	57.5	68.9	42.4	57.9
# Days	91	91	91	91	91	91	91	91	79	91
Jul 2019	68.4	67.5	67.2	60.3	59.7	60.6	56.9	68.4	41.5	57.1
# Days	31	31	31	31	31	31	31	31	24	31
Aug 2019	68.4	67.5	67.3	60.2	59.6	60.4	56.1	68.3	41.0	56.9
# Days	31	31	31	31	31	31	31	31	21	31
Sep 2019	68.1	67.2	66.9	60.0	59.4	60.3	56.5	67.8	43.6	56.7
# Days	30	30	30	30	30	30	30	27	21	30
Q-3 2019	68.3	67.4	67.1	60.2	59.6	60.4	56.5	68.2	42.1	56.9
# Days	92	92	92	92	92	92	92	89	66	92
Oct 2019	67.5	66.6	66.3	59.2	58.7	60.1	55.9	67.4	40.7	56.1
# Days	31	31	31	30	31	31	31	31	23	31
Nov 2019	67.8	66.9	66.6	59.3	59.2	60.5	56.4	67.6	42.7	56.6
# Days	30	30	30	30	30	30	30	30	25	30
Dec 2019	68.0	66.8	66.9	60.0	59.8	61.4	57.2	68.1	45.3	57.4
# Days	31	31	31	31	31	31	31	31	28	31
Q-4 2019	67.7	66.8	66.6	59.5	59.3	60.7	56.5	67.7	43.4	56.7
# Days	92	92	92	91	92	92	92	92	76	92
Jan 2020	67.6	66.6	66.5	59.7	59.5	60.6	57.1	67.5	42.8	56.6
# Days	31	31	31	31	31	31	30	30	30	31
Feb 2020	67.1	66.2	66.5	59.3	58.7	60.6	56.0	67.1	42.9	55.4
# Days	29	29	29	27	29	29	29	29	28	29
Mar 2020	65.3	64.7	64.2	58.6	58.0	58.7	55.4	66.6	44.2	55.5
# Days	31	31	31	31	31	31	31	31	27	31
Q-1 2020	66.8	65.9	65.8	59.2	58.8	60.1	56.2	67.1	43.3	55.9
# Days	91	91	91	89	91	91	90	90	85	91
Q-2 2019 thru Q-1 2020										
Total	67.8	66.9	66.6	59.9	59.3	60.6	56.7	68.0	42.9	56.9
# Days	366	366	366	363	366	366	365	362	306	366
Q-1 2019 thru Q-4 2019 (Previous 4 Quarters)										
Total	68.0	67.1	66.8	60.0	59.5	60.8	57.0	68.3	43.2	57.3
# Days	364	365	365	364	365	365	365	362	304	363
Change from Previous 4 Quarters										
	-0.2	-0.2	-0.2	-0.1	-0.2	-0.2	-0.3	-0.3	-0.3	-0.4

**TABLE 3
DAILY CNEL VALUES AT EACH MONITOR STATION
January 2020**

Date	NMS Site									
	1S	2S	3S	4S	5S	6S	7S	8N	9N	10N
1	68.1	67.0	65.9	60.2	59.8	60.5	57.4	68.2	41.5	57.4
2	68.6	67.9	67.4	60.5	60.5	61.5	58.0	67.9	43.0	56.9
3	68.2	66.7	66.3	59.8	59.6	60.2	57.3	67.8	28.6	56.8
4	67.7	66.7	66.5	59.2	59.6	60.1	56.8	67.2	34.2	56.2
5	68.6	67.6	67.0	60.3	60.4	61.1	57.6	68.8	41.5	56.5
6	57.0	53.6	65.6	37.7	43.3	61.2	#N/A	63.8	26.2	37.3
7	66.4	64.7	64.4	57.5	56.8	57.4	53.9	66.0	*#N/A	54.2
8	67.5	66.4	65.9	60.3	59.7	60.5	57.1	67.9	34.2	58.0
9	68.2	67.4	66.7	60.9	60.6	61.3	57.9	67.7	43.2	57.5
10	68.2	67.2	66.8	60.8	60.5	61.2	58.0	67.8	45.1	57.3
11	66.0	65.1	64.4	58.5	57.8	58.7	55.6	65.6	43.1	55.1
12	68.5	67.2	67.3	60.9	60.7	61.4	58.1	68.2	35.4	58.0
13	68.2	67.0	65.8	60.4	60.2	60.7	58.5	67.8	48.4	57.2
14	67.3	67.0	65.9	59.8	60.1	60.7	57.7	67.6	30.0	57.2
15	67.7	67.3	66.6	60.3	60.0	60.8	57.0	68.1	45.5	58.0
16	67.7	66.6	66.5	60.8	60.2	60.9	57.9	69.3	40.3	59.5
17	68.7	67.5	67.3	60.9	60.8	61.6	58.5	#N/A	46.4	57.6
18	66.3	65.2	65.5	57.9	57.6	58.7	55.6	65.7	28.9	53.0
19	67.2	65.7	65.5	58.4	57.8	58.5	55.3	67.6	44.6	55.5
20	68.7	67.5	67.2	61.0	60.2	61.1	57.6	68.7	45.2	58.3
21	67.9	66.8	66.3	60.2	60.4	61.1	58.1	67.5	48.0	57.2
22	68.0	67.5	67.0	60.7	60.3	61.3	57.7	67.9	39.4	57.3
23	68.2	67.3	67.2	60.1	59.8	60.9	57.2	67.9	33.9	56.8
24	68.4	67.5	67.3	60.5	60.1	60.9	57.3	68.0	39.3	57.4
25	65.3	64.8	64.3	57.4	57.5	58.1	54.7	65.6	43.2	54.9
26	68.1	67.4	66.9	60.2	59.8	60.6	57.0	68.5	45.0	58.0
27	68.7	68.0	67.5	60.3	60.7	61.2	58.0	67.7	44.7	56.7
28	67.1	65.8	65.5	59.2	59.1	59.9	56.4	66.9	42.5	56.2
29	65.2	64.2	67.5	56.7	56.8	62.8	54.0	63.8	32.4	48.1
30	68.1	67.0	66.7	59.3	58.8	59.8	56.2	67.0	38.5	54.6
31	67.7	66.0	66.6	58.9	59.2	60.1	56.6	66.8	44.9	54.3
Days	31	31	31	31	31	31	30	30	30	31
En. Avg	67.6	66.6	66.5	59.7	59.5	60.6	57.1	67.5	42.8	56.6

#N/A indicates insufficient data.

*#N/A indicates no aircraft-related noise events.

TABLE 4
DAILY CNEL VALUES AT EACH MONITOR STATION
February 2020

Date	NMS Site									
	1S	2S	3S	4S	5S	6S	7S	8N	9N	10N
1	65.4	64.2	64.2	#N/A	56.1	57.0	53.4	63.8	44.3	51.8
2	67.4	66.2	65.8	#N/A	58.9	59.9	56.4	68.5	41.7	58.4
3	58.9	56.6	66.1	49.1	47.7	61.9	43.1	62.9	37.2	38.8
4	60.3	59.8	63.3	52.3	51.3	58.3	50.5	64.1	33.1	45.5
5	66.3	65.1	65.4	58.7	59.1	59.3	55.8	66.8	40.4	55.6
6	68.1	67.4	66.7	60.1	59.6	60.6	56.8	67.8	41.8	56.6
7	68.2	67.6	67.0	60.3	60.3	61.2	57.5	67.5	45.3	56.8
8	65.5	64.9	64.2	58.3	57.8	58.7	55.2	65.7	40.6	54.3
9	66.0	64.2	69.2	58.0	58.3	65.2	54.2	66.1	48.6	52.1
10	65.6	64.6	67.9	57.1	57.4	63.4	54.5	67.1	42.4	52.2
11	64.2	63.8	64.3	56.5	56.3	59.3	53.2	66.4	41.8	54.7
12	67.9	67.2	66.5	60.0	59.5	60.2	56.7	68.2	47.5	57.3
13	69.1	68.3	68.0	60.8	61.0	61.7	58.6	67.9	39.9	56.5
14	68.6	68.1	67.8	60.3	60.4	61.1	57.0	68.1	39.6	56.4
15	66.8	66.2	65.6	58.9	58.8	58.8	55.2	65.5	46.3	54.3
16	67.6	67.0	66.5	59.8	59.2	60.2	56.8	67.6	*#N/A	56.2
17	68.8	68.0	67.9	61.1	60.4	61.5	57.9	69.0	43.7	57.7
18	68.0	67.1	67.1	60.9	60.2	61.1	57.6	68.3	44.1	56.9
19	67.9	67.1	66.8	60.4	60.0	60.7	56.9	68.3	38.2	57.2
20	68.2	67.5	66.8	60.3	59.3	60.2	56.5	68.3	27.5	56.6
21	68.1	67.1	66.6	60.9	59.1	60.6	57.6	68.7	44.8	57.8
22	67.3	66.1	66.1	60.4	59.0	59.8	56.9	66.7	28.9	55.7
23	68.0	67.4	67.2	60.4	60.1	61.1	57.9	68.1	41.4	56.8
24	68.3	67.8	67.6	60.3	60.5	61.4	57.9	67.7	43.9	56.3
25	67.0	65.8	66.8	58.3	56.9	60.6	54.4	63.7	28.7	44.5
26	64.1	63.7	64.2	55.9	55.8	59.0	52.6	66.3	38.8	51.8
27	67.0	65.8	65.8	58.5	57.4	58.6	55.1	66.5	44.9	53.0
28	67.1	66.0	65.8	58.7	57.4	58.3	54.7	67.0	42.5	54.7
29	66.2	65.3	64.7	59.2	57.3	58.3	54.9	66.2	41.5	55.2
Days	29	29	29	27	29	29	29	29	28	29
En. Avg	67.1	66.2	66.5	59.3	58.7	60.6	56.0	67.1	42.9	55.4

#N/A indicates insufficient data.

*#N/A indicates no aircraft-related noise events.

TABLE 5
DAILY CNEL VALUES AT EACH MONITOR STATION
March 2020

Date	NMS Site									
	1S	2S	3S	4S	5S	6S	7S	8N	9N	10N
1	68.0	67.4	66.7	60.8	60.3	60.9	58.1	68.4	41.9	57.6
2	65.2	64.3	65.6	56.5	57.3	61.1	54.6	67.2	43.0	53.2
3	64.6	64.3	64.0	56.7	56.3	57.9	52.4	67.2	*#N/A	54.0
4	67.7	66.7	66.5	60.6	59.5	60.2	56.0	67.9	43.4	56.7
5	68.2	67.8	67.1	60.1	60.1	60.5	57.0	67.7	37.4	56.6
6	67.4	67.0	66.2	60.1	59.2	60.2	56.2	68.3	*#N/A	56.9
7	64.9	64.6	63.8	58.9	57.9	58.7	54.3	66.6	45.7	56.2
8	67.4	66.7	65.9	60.2	59.5	60.4	57.5	68.4	41.0	57.4
9	67.1	66.2	65.8	60.0	58.9	60.0	57.3	68.0	30.0	57.1
10	67.3	66.0	65.4	60.3	58.4	59.8	56.6	67.9	43.7	56.9
11	67.0	66.5	66.0	60.4	59.4	60.3	57.1	67.8	*#N/A	57.0
12	67.3	66.6	67.0	60.4	60.1	62.2	57.3	68.0	42.8	56.6
13	67.5	66.8	66.4	60.8	60.0	60.4	57.4	68.4	*#N/A	57.8
14	65.3	64.6	64.6	59.2	58.5	59.2	55.8	66.5	45.6	55.9
15	66.1	65.8	65.1	59.3	58.8	59.6	56.7	67.5	44.7	56.8
16	66.0	65.2	64.5	60.4	59.1	59.7	57.7	68.3	43.7	57.8
17	65.3	64.8	64.0	59.2	58.6	58.7	55.5	66.9	34.0	56.2
18	64.8	64.8	63.3	58.5	58.2	58.1	55.5	66.3	41.8	55.1
19	64.6	64.0	63.3	58.5	58.1	58.5	55.7	66.0	44.1	55.6
20	64.4	63.9	63.0	58.7	57.5	58.3	55.3	66.0	33.6	54.9
21	61.7	61.2	60.5	56.0	54.5	55.3	52.2	64.6	39.7	53.4
22	63.8	63.5	62.7	58.3	57.6	57.6	54.9	66.5	34.8	55.9
23	62.8	63.0	61.6	57.0	56.8	56.4	54.2	65.7	50.9	54.5
24	62.4	62.5	60.9	56.7	56.8	56.4	54.0	65.1	42.2	53.7
25	61.4	62.2	60.6	55.8	56.2	56.0	53.9	64.9	48.2	53.9
26	61.1	62.0	59.8	54.5	55.6	54.8	53.6	63.7	39.4	52.4
27	61.1	60.6	59.6	54.9	54.1	54.1	52.1	62.0	38.5	50.2
28	59.4	58.5	58.4	54.0	53.2	53.6	50.1	63.0	45.8	51.8
29	60.5	59.4	59.2	54.8	54.8	54.5	51.8	62.9	46.8	52.2
30	60.9	59.0	59.7	55.0	54.3	54.8	51.4	63.2	36.8	52.0
31	60.0	59.6	58.8	54.3	53.5	53.6	49.8	62.6	49.9	49.9
Days	31	31	31	31	31	31	31	31	27	31
En. Avg	65.3	64.7	64.2	58.6	58.0	58.7	55.4	66.6	44.2	55.5

#N/A indicates insufficient data.

*#N/A indicates no aircraft-related noise events.

TABLE 6
MEASURED AVERAGE SINGLE EVENT NOISE EXPOSURE LEVELS
Commercial Class A
January - March 2020

Carrier	AC Type	# Deps		NMS Site									
				1S	2S	3S	4S	5S	6S	7S	8N	9N	10N
Alaska Air	A320	507	Average Count	95.3 (462)	94.5 (446)	94.2 (461)	88.0 (447)	86.2 (461)	87.1 (458)	84.2 (460)	90.5 (39)	#N/A (0)	79.3 (3)
	B737	2	Average Count	96.1 (2)	95.1 (2)	94.9 (2)	89.3 (2)	86.8 (2)	87.2 (2)	85.1 (1)	#N/A (0)	#N/A (0)	#N/A (0)
	B738	361	Average Count	97.5 (325)	96.5 (317)	95.2 (325)	89.0 (320)	89.3 (323)	89.9 (318)	86.6 (326)	92.2 (27)	80.6 (2)	80.0 (3)
American	A320	163	Average Count	94.4 (150)	94.1 (140)	92.3 (149)	85.7 (149)	85.1 (152)	86.5 (145)	83.8 (150)	89.9 (10)	#N/A (0)	#N/A (0)
	A321	121	Average Count	98.5 (108)	98.1 (102)	96.6 (110)	88.7 (106)	87.7 (111)	88.4 (111)	85.3 (108)	91.1 (7)	#N/A (0)	#N/A (0)
	B738	1025	Average Count	98.5 (918)	97.4 (859)	97.0 (900)	89.7 (887)	89.3 (913)	90.0 (891)	86.6 (909)	93.8 (93)	86.6 (26)	81.2 (15)
Compass	E175	325	Average Count	95.5 (297)	95.2 (274)	95.8 (294)	89.5 (286)	89.1 (295)	89.2 (289)	84.9 (288)	92.2 (23)	#N/A (0)	79.4 (1)
Delta	A220	82	Average Count	87.9 (69)	88.1 (59)	86.3 (69)	81.3 (66)	79.8 (55)	81.0 (55)	78.1 (8)	83.8 (11)	80.4 (3)	#N/A (0)
	A319	214	Average Count	95.9 (168)	95.1 (158)	95.0 (168)	88.4 (163)	87.7 (164)	88.4 (167)	84.1 (167)	92.7 (41)	86.3 (21)	81.2 (8)
	A320	3	Average Count	96.1 (3)	95.4 (3)	95.2 (3)	88.3 (3)	87.9 (3)	88.6 (3)	85.3 (3)	#N/A (0)	#N/A (0)	#N/A (0)
	B738	1	Average Count	93.4 (1)	91.7 (1)	91.7 (1)	89.3 (1)	86.0 (1)	88.5 (1)	85.0 (1)	#N/A (0)	#N/A (0)	#N/A (0)
	B752	301	Average Count	96.1 (256)	95.7 (240)	95.7 (259)	88.8 (257)	88.0 (253)	88.1 (256)	84.2 (254)	92.8 (33)	84.3 (10)	82.6 (2)
FedEx	A306	64	Average Count	96.8 (60)	96.7 (57)	93.9 (59)	88.5 (59)	88.1 (59)	89.2 (60)	85.6 (60)	94.9 (4)	81.2 (1)	80.9 (2)
Frontier Airlines	A20N	97	Average Count	88.3 (87)	88.3 (85)	87.6 (85)	81.8 (79)	79.8 (65)	82.2 (77)	79.4 (27)	84.0 (7)	#N/A (0)	#N/A (0)
	A319	1	Average Count	94.7 (1)	93.4 (1)	94.5 (1)	87.9 (1)	86.2 (1)	88.2 (1)	85.8 (1)	#N/A (0)	#N/A (0)	#N/A (0)
	A320	59	Average Count	93.9 (55)	93.6 (54)	91.7 (55)	85.9 (55)	85.0 (52)	86.2 (54)	83.8 (49)	91.1 (4)	#N/A (0)	#N/A (0)
Horizon Air	E175	182	Average Count	91.6 (170)	91.3 (157)	89.6 (171)	85.0 (163)	84.8 (167)	86.2 (170)	83.1 (164)	90.9 (11)	#N/A (0)	80.0 (2)
Southwest	B737	1516	Average Count	91.9 (1375)	91.7 (1291)	89.7 (1373)	84.9 (1352)	84.8 (1392)	85.4 (1374)	83.4 (1354)	91.4 (102)	79.9 (6)	78.6 (1)
	B738	33	Average Count	91.1 (27)	91.0 (27)	87.9 (28)	83.3 (28)	83.7 (29)	83.9 (29)	84.0 (28)	90.4 (4)	#N/A (0)	#N/A (0)
United	A320	331	Average Count	94.7 (301)	94.1 (289)	92.9 (299)	86.6 (288)	85.7 (299)	87.3 (293)	84.5 (300)	92.0 (23)	85.6 (4)	82.8 (2)
	B737	269	Average Count	96.5 (249)	95.2 (233)	96.1 (244)	90.1 (244)	90.4 (247)	90.7 (241)	86.7 (244)	92.7 (20)	#N/A (0)	78.2 (1)
	B738	745	Average Count	98.2 (639)	97.0 (592)	96.8 (633)	89.9 (620)	90.0 (637)	90.6 (611)	87.2 (631)	93.2 (83)	87.9 (16)	81.0 (10)
UPS	B752	51	Average Count	94.9 (47)	94.9 (46)	93.7 (47)	86.5 (47)	86.4 (47)	87.0 (47)	82.7 (43)	87.9 (4)	#N/A (0)	#N/A (0)
WestJet	B736	17	Average Count	94.7 (15)	93.2 (15)	94.1 (15)	88.6 (14)	87.6 (15)	88.4 (15)	83.3 (15)	90.5 (2)	#N/A (0)	#N/A (0)
	B737	63	Average Count	95.5 (59)	94.3 (59)	94.8 (59)	89.6 (58)	89.4 (57)	90.2 (57)	84.9 (58)	93.6 (4)	81.3 (1)	80.6 (1)

**TABLE 7
MEASURED AVERAGE SINGLE EVENT NOISE EXPOSURE LEVELS
Commercial Class E
January - March 2020**

Carrier	AC Type	# Deps		NMS Site									
				1S	2S	3S	4S	5S	6S	7S	8N	9N	10N
Delta	A220	309	Average Count	87.3 (282)	87.6 (273)	85.8 (283)	80.9 (229)	79.7 (199)	80.5 (218)	77.9 (13)	83.0 (21)	#N/A (0)	#N/A (0)
Horizon Air	E175	23	Average Count	92.1 (20)	91.7 (18)	89.9 (20)	85.5 (20)	85.3 (19)	86.4 (20)	83.5 (19)	89.2 (3)	#N/A (0)	#N/A (0)
SkyWest Coml.	E175	800	Average Count	90.4 (733)	90.3 (679)	89.1 (727)	85.2 (706)	84.6 (730)	85.7 (724)	82.9 (707)	90.1 (56)	82.5 (1)	78.0 (1)
Southwest	B737	1684	Average Count	91.5 (1526)	91.4 (1430)	89.4 (1514)	84.6 (1496)	84.7 (1524)	85.2 (1494)	83.2 (1493)	91.1 (136)	80.3 (10)	79.7 (5)

**TABLE 8
MEASURED AVERAGE SINGLE EVENT NOISE EXPOSURE LEVELS
Commuter
January - March 2020**

Carrier	AC Type	# Deps		NMS Site									
				1S	2S	3S	4S	5S	6S	7S	8N	9N	10N
Delux Public Charters	E135	401	Average Count	85.4 (361)	85.9 (348)	86.3 (359)	80.2 (302)	78.9 (147)	80.3 (285)	77.7 (9)	83.9 (30)	78.8 (1)	#N/A (0)
	E145	78	Average Count	85.7 (72)	86.6 (68)	86.5 (72)	79.9 (52)	78.8 (32)	79.9 (54)	#N/A (0)	84.9 (5)	#N/A (0)	#N/A (0)
SkyWest	CL60	3	Average Count	84.6 (3)	85.0 (3)	85.1 (3)	#N/A (0)	81.0 (1)	77.3 (1)	#N/A (0)	#N/A (0)	#N/A (0)	#N/A (0)
	CRJ7	70	Average Count	87.1 (64)	87.2 (62)	86.8 (63)	80.1 (39)	81.0 (53)	81.9 (62)	80.0 (50)	89.6 (6)	#N/A (0)	#N/A (0)
	E175	291	Average Count	90.0 (266)	90.0 (229)	88.7 (264)	85.2 (262)	84.3 (258)	85.4 (260)	83.2 (254)	89.0 (21)	#N/A (0)	#N/A (0)

**TABLE 8-GA
MEASURED AVERAGE SINGLE EVENT NOISE EXPOSURE LEVELS
General Aviation
January - March 2020**

Carrier	AC Type	# Deps		NMS Site									
				1S	2S	3S	4S	5S	6S	7S	8N	9N	10N
General Aviation	Jet	3727	Average Count	88.1 (3274)	87.7 (3093)	89.0 (3194)	83.1 (1921)	82.6 (1539)	83.8 (2086)	82.4 (817)	85.8 (236)	80.9 (8)	81.7 (3)

**TABLE 9
AIR CARRIER OPERATIONAL HISTORY**

Carrier	AC Type	Year					
		2016	2017	2018	2019	2020	
Alaska Air	AS	A319			64	244	308
		A320			262	3,403	709
		B734	76	24			
		B737	3,258	1,233	384	160	4
		B738	4,439	6,420	8,260	5,247	722
American	AA	A21N				2	
		A319	178	332	722	432	
		A320	868	266	78	634	327
		A321	563	56	4	214	242
		B738	10,538	11,556	11,457	10,972	2,052
		B752	74	4	4	36	
Compass	CP	E170	152	78			
		E175	1,669	2,726	3,188	3,150	651
Delta	DL	A220				851	782
		A319	3,444	2,053	1,979	1,987	427
		A320	160	94	12	11	5
		B712		3,267	3,379	2,495	
		B737		146	188	8	
		B738		40	18	40	2
		B739			2		
		B752	2,128	2,137	2,889	2,889	604
	MD90			2			
FedEx	FM	A306	510	506	508	510	128
Frontier Airlines	F9	A20N*			600	900	194
		A319	646	356	190	100	2
		A320	740	628	654	428	118
		A321	2				
		A32N*	12	438			
Horizon Air	QX	DH8D	1,156	1,456	728	12	
		E175		339	2,716	4,257	409
SkyWest Coml.	SC	CRJ9	1,899	1,440	6		
		E175	3,554	4,761	6,960	7,686	1,602
Southwest	WN	B38M		2	14	10	
		B737	41,806	35,971	32,380	29,360	6,399
		B738	1,144	58	64	134	66
United	UA	A319	1,999	1,470	999	1,216	69
		A320	2,670	3,957	3,927	3,151	592
		B737	5,246	4,044	2,987	2,816	537
		B738	1,252	3,302	5,154	5,627	1,490
		B752		2	4		
UPS	5X	A306	52	45	22	12	
		B752	370	369	394	404	102
WestJet	WS	B736	32	30	10	58	34
		B737	642	644	666	618	126
Total			91,279	90,250	91,875	90,074	18,703

*In 2018, the code for the Airbus A320neo was changed from A32N to A20N.

TABLE 10
AIRCRAFT OPERATIONAL HISTORY

Aircraft	Year				
	2016	2017	2018	2019	2020
A20N*			600	900	194
A21N				2	
A220				851	782
A306	562	551	530	522	128
A319	6,267	4,211	3,954	3,979	806
A320	4,438	4,945	4,933	7,627	1,751
A321	565	56	4	214	242
A32N*	12	438			
B38M		2	14	10	
B712		3,267	3,379	2,495	
B734	76	24			
B736	32	30	10	58	34
B737	50,952	42,038	36,605	32,962	7,066
B738	17,373	21,376	24,953	22,020	4,332
B739			2		
B752	2,572	2,512	3,291	3,329	706
CRJ9	1,899	1,440	6		
DH8D	1,156	1,456	728	12	
E170	152	78			
E175	5,223	7,826	12,864	15,093	2,662
MD90			2		
Total	91,279	90,250	91,875	90,074	18,703

*In 2018, the code for the Airbus A320neo was changed from A32N to A20N.

**TABLE 11
AIR CARRIER AVERAGE DAILY DEPARTURE HISTORY**

Carrier	AC Type	Year					
		2016	2017	2018	2019	2020	
Alaska Air	AS	A319			.088	.334	.423
		A320			.359	4.660	.964
		B734	.104	.033			
		B737	4.451	1.693	.526	.219	.005
		B738	6.066	8.789	11.315	7.189	.986
American	AA	A21N				.003	
		A319	.243	.455	.989	.592	
		A320	1.186	.364	.107	.868	.445
		A321	.770	.077	.005	.293	.331
		B738	14.402	15.827	15.696	15.030	2.803
Compass	CP	E170	.208	.107			
		E175	2.279	3.734	4.367	4.315	.888
Delta	DL	A220				1.164	1.068
		A319	4.705	2.811	2.712	2.723	.585
		A320	.219	.129	.016	.014	.008
		B712		4.471	4.627	3.419	
		B737		.200	.258	.011	
		B738		.055	.025	.055	.003
		B739			.003		
		B752	2.910	2.926	3.959	3.956	.825
FedEx	FM	A306	.697	.693	.696	.699	.175
Frontier Airlines	F9	A20N*			.822	1.233	.265
		A319	.883	.488	.260	.137	.003
		A320	1.011	.860	.896	.586	.161
		A321	.003				
		A32N*	.016	.600			
Horizon Air	QX	DH8D	1.579	1.995	.997	.016	
		E175		.466	3.721	5.830	.560
SkyWest Coml.	SC	CRJ9	2.593	1.975	.008		
		E175	4.855	6.523	9.534	10.529	2.191
Southwest	WN	B38M		.003	.019	.014	
		B737	57.104	49.274	44.351	40.216	8.746
		B738	1.563	.079	.088	.184	.090
United	UA	A319	2.730	2.014	1.373	1.666	.096
		A320	3.648	5.422	5.375	4.315	.809
		B737	7.169	5.534	4.093	3.855	.735
		B738	1.710	4.526	7.058	7.712	2.036
		B752		.003	.005		
UPS	5X	A306	.071	.060	.030	.016	
		B752	.505	.507	.540	.553	.139
WestJet	WS	B736	.044	.041	.014	.079	.046
		B737	.877	.882	.912	.847	.172
Total			124.699	123.622	125.852	123.384	25.560

*In 2018, the code for the Airbus A320neo was changed from A32N to A20N.

**TABLE 12
AIRCRAFT Glossary**

AC Type	Make	Model/Series
A20N	Airbus	320-200 Neo
A306	Airbus	300-600
A310	Airbus	310-200
A320	Airbus	320
A32N	Airbus	320-200 Neo
B38M	Boeing	737-800 Max
B712	Boeing	717-200
B733	Boeing	737-300
B734	Boeing	737-400
B736	Boeing	737-600
B737	Boeing	737-700
B738	Boeing	737-800
B739	Boeing	737-900
B752	Boeing	757-200
CRJ7	Canadair Regional Jet	700
CRJ9	Canadair Regional Jet	900
DH8D	Bombardier	Dash 8
E135	Embraer	135
E170	Embraer	170
E175	Embraer	175
MD90	McDonnell Douglas	90

QUARTERLY NOISE MEETING

MARCH 18, 2020

Meeting canceled due to COVID-19 restrictions.

SUMMARY OF STATISTICAL INFORMATION
FOR
CALIFORNIA DEPARTMENT OF TRANSPORTATION

1. Size of Noise Impact Area as defined in the Noise Standards (California Code of Regulations, Title 21, chapter 2.5, Subchapter 6):
6.67 acres (or 0.010 square miles)
2. Estimated Number of dwelling units included in the Noise Impact Area as defined in the Noise Standards:
67
3. Estimated number of people residing within the Noise Impact Area as defined in the Noise Standards:
168 (based on 2.5 people per dwelling)
4. Identification of aircraft of type having highest takeoff noise level operating at this airport together with estimated number of operations by this aircraft type during the calendar quarter reporting period:
B737-800 – 4,341 (Arrivals + Departures)
5. Total number of aircraft operations during the calendar quarter:
59,117
6. Number of Air Carrier operations during the calendar quarter:
(Not mandatory)
20,395
7. Percentage of Air Carrier operations by aircraft certified under Federal Aviation Regulation (FAR) Part 36, Stage III:
(Not mandatory)
100%
8. Estimated number of operations by General Aviation aircraft during the calendar quarter:
(Not mandatory)
38,560
9. Estimated number of operations by Military aircraft during the calendar quarter:
(Not mandatory)
162