

**LOCATED AT ALL RUNWAY HOLD POSITIONS:**  
 - Surface painted hold position markings  
 - Enhanced centerline markings

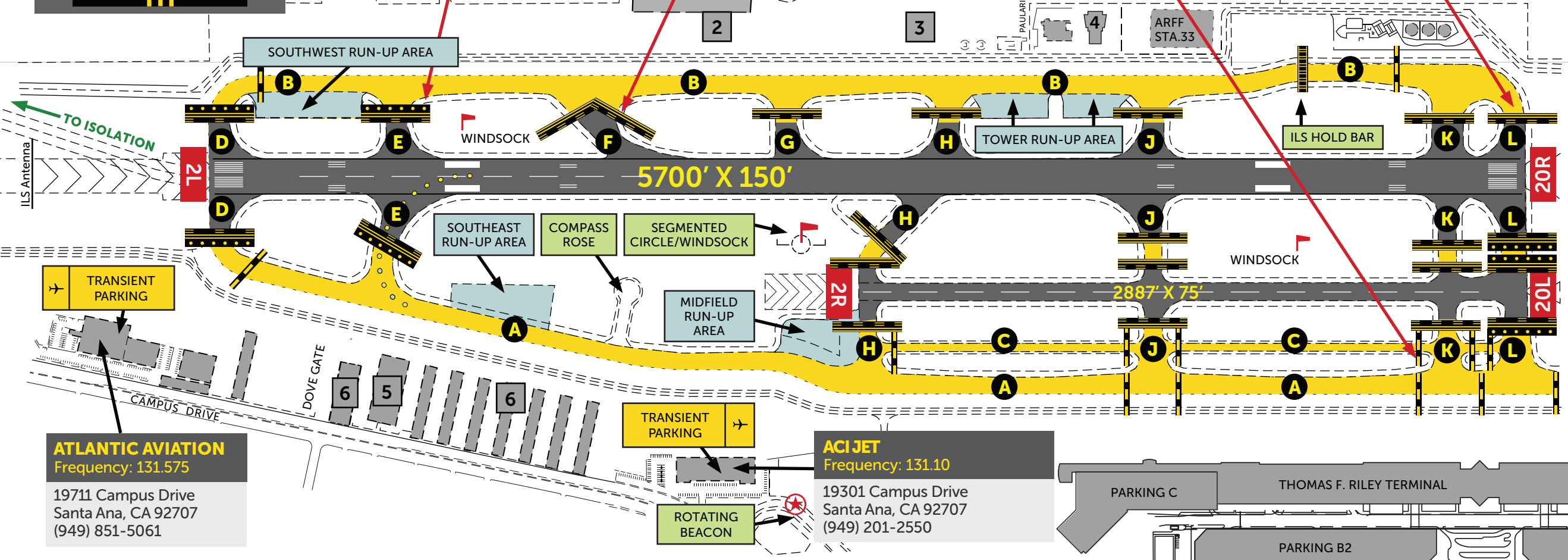
**IN-PAVEMENT RWY GUARD LIGHTS:**  
 Located at TWYs D, E, L

**RWY HOLD POSITION SIGN:**  
 Hold short of RWY at TWY

**ELEVATED RWY GUARD LIGHTS:**  
 Located at ALL TWY/RWY intersections

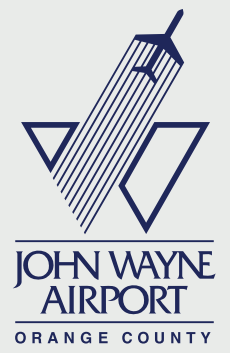
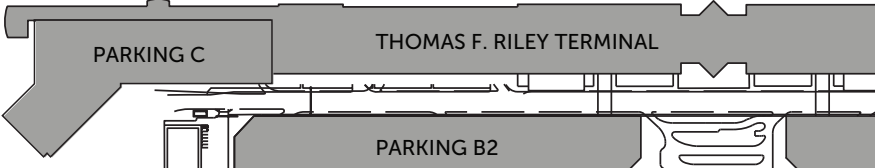
**TWY/TWY HOLDING POSITION:**  
 HOLD HERE if instructed to by ATC

**RWY HOLD BARS:**  
 Always stop at SOLID LINE DO NOT CROSS unless instructed to do so by ATC



**ATLANTIC AVIATION**  
 Frequency: 131.575  
 19711 Campus Drive  
 Santa Ana, CA 92707  
 (949) 851-5061

**ACIJET**  
 Frequency: 131.10  
 19301 Campus Drive  
 Santa Ana, CA 92707  
 (949) 201-2550



**SNA TENANTS**

1. Jay's Aircraft Maintenance
2. Martin Aviation/Lyon Air Museum/ Western Avionics
3. ACI Jet Westside Hangars
4. FAA Control Tower
5. South Coast Associates Hangars
6. Executive Hangars

**LEGEND**

- Runway Environment
- Taxiway Environment
- Runway Hold Short Bars
- Run-up Areas
- In-Pavement Guard Lights
- Taxiway Lead-off Lights

**HELP PREVENT RUNWAY INCURSIONS**

1. **"READ BACK"** ALL RUNWAY HOLD SHORT INSTRUCTIONS.
2. BE VIGILANT WHEN OPERATING IN VICINITY OF TWY H, TWY C, RWY20L INTERSECTION.
3. WHEN IN DOUBT TELL CONTROLLERS **"UNFAMILIAR"** AND REQUEST PROGRESSIVE TAXI INSTRUCTIONS.
4. BE FAMILIAR - KNOW LAYOUT, SIGNAGE AND MARKINGS.
5. **YOUR ACTIONS CAN MAKE ALL THE DIFFERENCE!**